



**&**



## **Software Installation Guide for Math and More 7/8**

**Document Version 3.1  
For Software Version 3.0.0**

### **Index:**

- 1. Introduction and Technical Notes**
- 2. Stand Alone Installation**
- 3. Network Installation (Microsoft or Novell)**
- 4. SchoolConnect Installation**

# 1. Introduction and Technical Notes

## ***Who should install this program:***

This manual is for the Technician who will be installing programs on your Local Area Network. It is assumed that your Technician has training and experience installing programs under your version of Microsoft Windows operating systems (Win 95, 98, NT, 2000 Pro or XP Pro) and has training and experience installing and maintaining programs under your Network Operating System (NOS) like Novell Netware, Microsoft Windows NT Server or Microsoft Windows 2000 server.

## ***Technical Support in the U.S.:***

Bright Blue Software in the United States provides technical support for this program. If you are a school or district in the United States and require assistance during the installation of this program or during the first year of operation you should call Bright Blue Software support at 1-866-690-6748. After the first year customers are asked to purchase Technical Telephone Support (TTS) on an annual basis. Pricing for TTS may be obtained by calling 1-866-690-8090 or found at [www.brightbluesoftware.com](http://www.brightbluesoftware.com). One TTS contract covers a school building for all programs purchased from a Value Added Resellers (VARs) of Bright Blue Software. Your first year of TTS is included for FREE with the purchase of this program.

TTS covers the use, operation, installation and maintenance of this program. If you require assistance for this program please call the TTS phone line 1-866-690-6748. Certain program updates will be provided at the Bright Blue Software web site at [www.brightbluesoftware.com](http://www.brightbluesoftware.com). You should check this program before you install this program to see if there are any program updates available. As problems are found and fixed the updates will be available for download.

## ***Program Requirements:***

1. Workstation Operating System: Windows 95 OSR2, Windows 98 Second Edition, Windows NT 4 Workstation with Service Pack 4, Windows 2000 Professional with Service Pack 2 installed or Windows XP Professional.
2. Network Operating System: Novell Netware (4.x or Newer), Microsoft Windows NT Server 4.0 or Newer.
3. Micro Processor: Pentium 60 MHz or better
4. Video Resolution: 800 x 600 with 16 bit color or better
5. Memory: 32 MB or better (for Windows 98)
6. Disk Space on file server or standalone workstation: 10 MB for the program files and 200 KB for each student that will use the program.

## ***The Launcher:***

This instructional program is used in conjunction with a program called the Launcher. Its purpose is to allow teacher to set program options and personalize the instruction units to suite their curriculum and lesson plans. This version of the launcher is installed to the file server (network and SchoolConnect) and does not require a node installation at each workstation. If previous versions of the launcher exist on your workstations and server they do not need to be removed in order for this new version to work properly.

## Math and More 7/8 Installation Guide “Introduction”

### **Notes:**

1. Launcher – If previous versions of the launcher exist on your workstations and server they do NOT need to be removed in order for this new version to work properly.
2. Program Directory – If you are upgrading this program from a previous version the existing program directory should be removed before this program is installed. The installation process will take many times longer and leave excess files behind if the original version is not removed before this version is installed.
3. Home Directory – Each user is expected to have a home directory on network installations. This is the directory where their student’s work history and personal files will be stored. Each user is expected to have a unique network logon and personal home directory root mapped to the same location at logon.
4. Shortcuts - The installation wizard will create a shortcut in the launcher directory. This shortcut will be used for students and teachers to launch the program. You should copy this to the location where your students launch programs from.
5. Network Rights for Launcher – If you are installing this program to a network (Microsoft or Novell) then special directory rights must be set for certain directories. This function is NOT performed by the installation program. If you are not familiar with setting directory rights then you should request the assistance of your local network technician or call Bright Blue Software Technical Telephone Support (TTS) at 1-866-690-6748. This is a one time operation. Once the rights are correctly set the launcher will maintain all the directories and files needed for normal operation.

| <b>Directory</b>                                       | <b>Purpose</b>   | <b>Administrator Rights</b>   | <b>Teacher Rights</b>  | <b>Student Rights</b>  |
|--|--|---|--|--|
| Main Launcher Directory<br><br>F:\TLCLauncher          | Folder for Launcher program files and both the “Groupwork” & “Assignment” Directory.                                 | Novell: “All Rights”<br><br>Microsoft: “Full Control”   | Novell: Read and File Scan<br><br>Microsoft: Read & Execute, List folder contents, and Read  | Novell: Read and File Scan<br><br>Microsoft: Read & Execute, List folder contents, and Read  |
| Groupwork Directory<br><br>F:\TLCLauncher\Groupwork    | Folder for teachers files that students must read but are not allowed to modify.                                     | Novell: All Rights<br><br>Microsoft: Full Control   | Novell: Read, Write, Create, Erase, Modify, File Scan<br><br>Microsoft: Modify, Read & Execute, List folder contents, Read and Write | Novell: Read, Write, Create, Erase, Modify, File Scan<br><br>Microsoft: Modify, Read & Execute, List folder contents, Read & Write |
| Assignment Directory<br><br>F:\TLCLauncher\Assignments | Folder for students and groups of students to share files.   | Novell: All Rights<br><br>Microsoft: Full Control   | Novell: Read, Write, Create, Erase, Modify, File Scan<br><br>Microsoft: Modify, Read & Execute, List folder contents, Read and Write | Novell: Read and File Scan<br><br>Microsoft: Read & Execute, List folder contents, and Read  |
| Program Directory                                      | Folder for instructional program executable and data files.  | Novell: All Rights<br><br>Microsoft: Full Control   | Novell: Read and File Scan<br><br>Microsoft: Read & Execute, List folder contents, and Read  | Novell: Read and File Scan<br><br>Microsoft: Read & Execute, List folder contents, and Read  |
| Home Directory<br><br>H:\                              | Folder where students and teachers will store their personal files and work history. Must be unique for each user. . | Each user should have full rights to their own home directory.<br>It must be root mapped to the same drive letter at logon. |  |  |

**This Page Intentionally Left Blank.**

## **2. Stand Alone Installation**



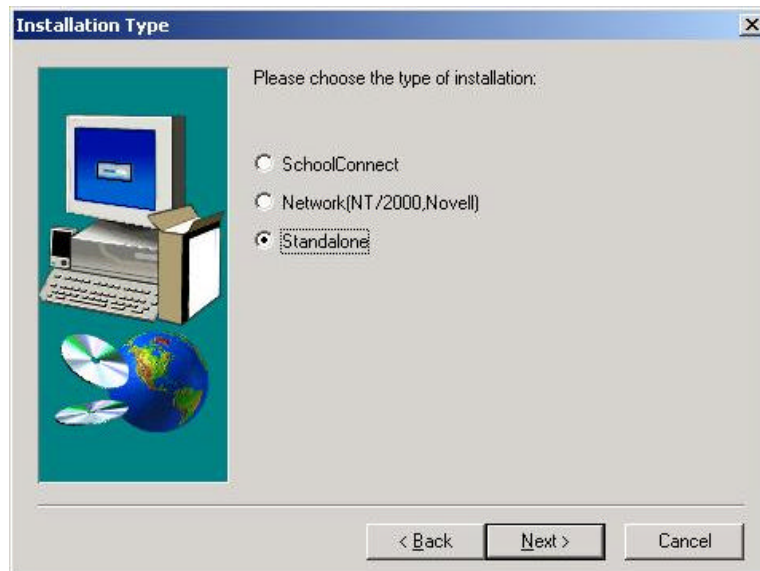
## 2. Stand Alone Installation

**Important :**

**Upgrade Note:** If you are upgrading this program from a previous version the existing program directory **must** be removed before this program is installed. The installation process will take many times longer and leave excess files behind if the original version is not removed before this version is installed

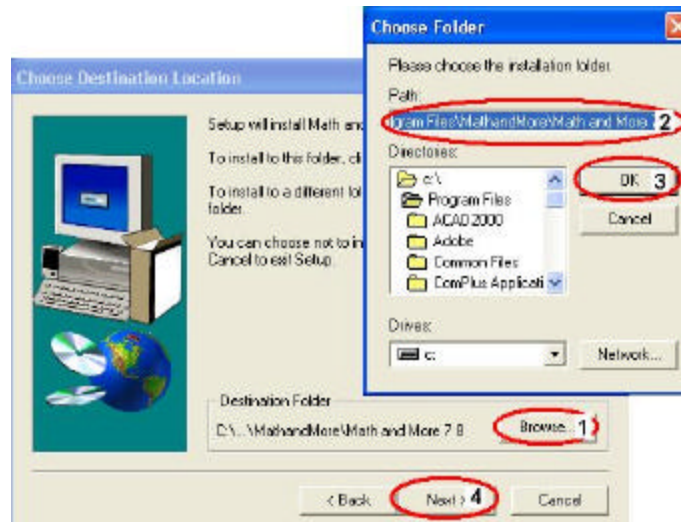
If you have an older version of the TLC Launcher and plan on leaving it on your system, please note that you **must** install this version of the TLC Launcher to a **separate** directory. Shortcuts that are created are different from the ones currently existing (if any) and therefore run differently.

1. Double click on My Computer on the Windows Desktop.
2. Double click on the CDRom drive.
3. If you wish to install the Canadian version of Math and More 78, double click on the **MAM78** folder. If you wish to install the US version, double click on the **MAM78 US** folder.
4. Double click on the SETUP.EXE icon.
5. Click Next on the Welcome window.
6. You will be prompted for your installation type. Select STANDALONE then click Next to continue.

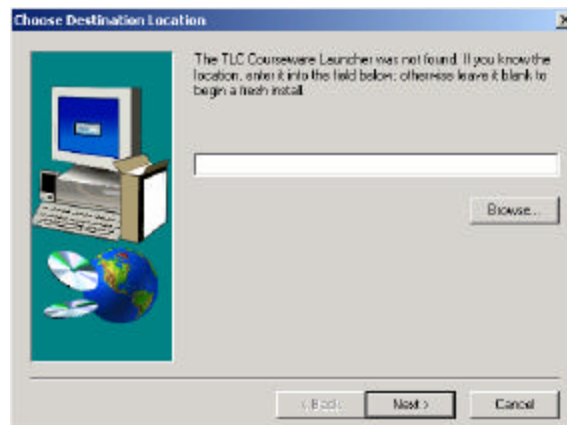


## Math and More 7/8 Installation Guide “Stand Alone”

7. You will now be prompted for an installation path for the software. The default location is C:\Program Files\MathandMore\Math and More 7 8. To continue installing the software to this location, click on Next. To change the location, click on Browse (1), type in a new location in the Path box (2), click on OK (3), click Yes to create the new location (if it does not already exist) then click on Next (4).



8. Necessary files will be copied and the TLC Launcher installation will begin. If the TLC Launcher is not found on your system, a screen will pop up asking you to identify its location. **Note:** If the TLC Launcher is found, this will not happen; therefore, skip to the next step. If you know it is not installed, leave the destination box empty, click on Next and move to Step 10.



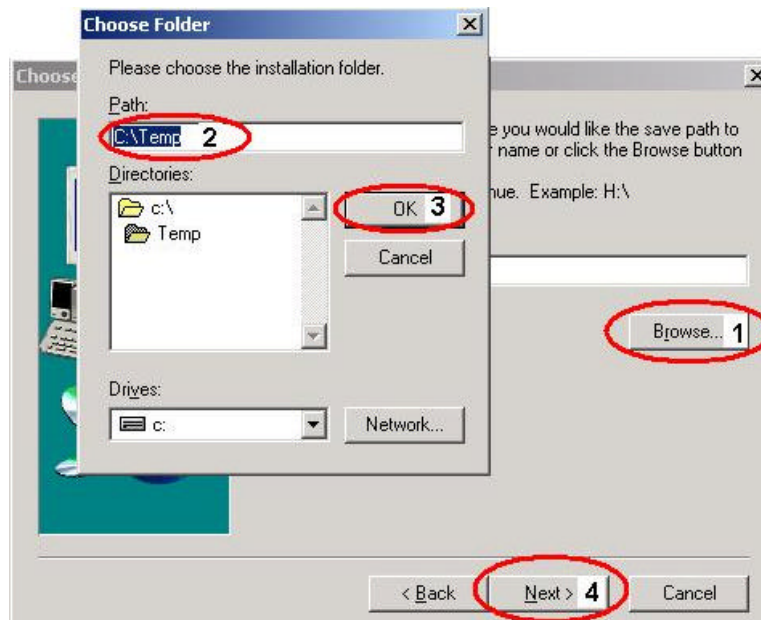
If it is installed, and you know its location, click on the Browse button, locate the folder, click on OK, and then click on Next. Continue to the next step.

Math and More 7/8 Installation Guide  
“Stand Alone”

9. If the TLC Launcher was found initially or the specified location from Step 8 contains a copy of the TLC Launcher, one of the three following scenarios will take place:
  - a) If the TLC Launcher that exists on the system is **older** than the one being installed, the TLC Launcher will automatically be updated.
  - b) If the TLC Launcher that exists on the system **matches** the version being installed, the current file will be left.
  - c) If the TLC Launcher that exists on the system is **newer** than the one being installed, the current file will be left.

The Student Save Path will not be prompted for in any of these scenarios. The TLC Launcher will use the existing save path. To view the location of the Students Save Path, open up the TLCLauncher.ini file in the Groupwork folder of the TLC Courseware Launcher directory. The 6<sup>th</sup> line contains a SavePath=..... statement, that specifies the Students Save Path. Continue to Step 13.

10. Click Next on the Welcome Window.
11. You will be prompted for a save path. This is the location in which users will store Math and More 78 files. The default path is C:\Temp. To keep the default save path, press Next. To change the location, click on Browse (1), type in a new location in the Path box (2), click on OK (3), click Yes to create the new location (if it does not already exist) then click on Next (4).



12. You will be prompted for an installation location for the TLC Launcher. The default location is C:\Program Files\TLC Courseware Launcher. To continue the installation to that path, click on Next. To change the location, click the Browse button and type in a new location, click on OK, and then click on Next. The necessary files will be copied.



Math and More 7/8 Installation Guide  
“Stand Alone”

13. Click Finish on both the TLC Launcher installation and the Math and More 78 installation windows.
14. The final step in the installation process is to copy the Math and More 78 shortcut from within the TLC Launcher directory to a location in which you wish to execute it from. Double click on My Computer on the Windows Desktop.
15. Browse to the TLC Launcher directory (the default location being C:\Program Files\TLC Courseware Launcher).
16. Highlight the Math and More 78 shortcut, right click on it and select Copy.
17. Browse to the location in which you wish to run the courseware from (for example, the Windows Desktop), right click anywhere in the window and select Paste. This will place a shortcut to Math and More 78 in the desired location. The installation is now complete.

**This Page Intentionally Left Blank.**

### **3. Network Installation (Microsoft or Novell)**

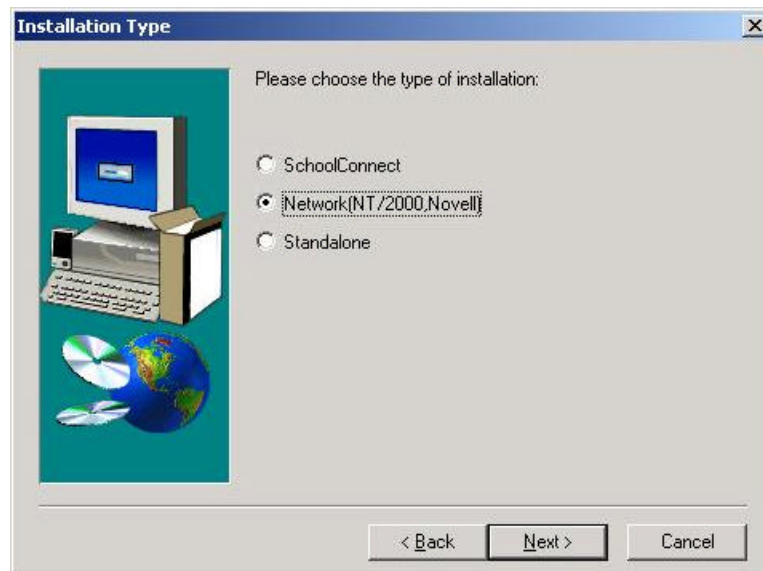


## 3. Network Installation (Microsoft or Novell)

**Upgrade Note:** If you are upgrading this program from a previous version the existing program directory **must** be removed before this program is installed. The installation process will take many times longer and leave excess files behind if the original version is not removed before this version is installed

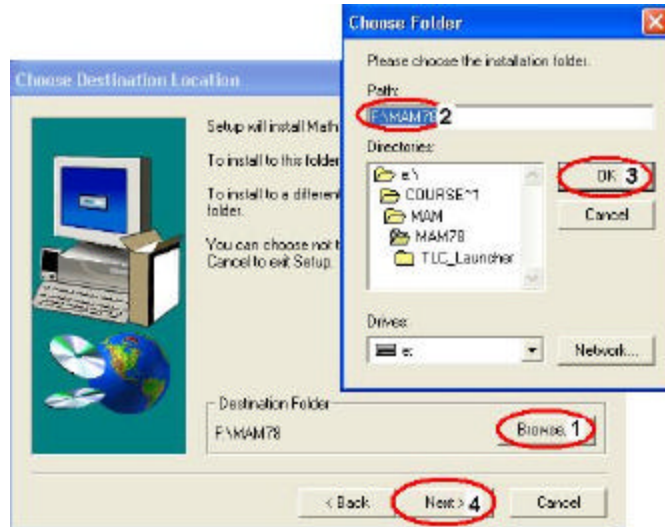
**Important:** Once you have completed a Network installation of the Launcher, you **MUST** apply folder Rights/Permissions to two (2) of the Launcher directories. See the Directory Rights/Permissions section for necessary settings.

1. Login to one of the networked workstations as a user with administrative privileges.
2. Double click on My Computer on the Windows Desktop.
3. Double click on the CDROM drive.
4. If you wish to install the Canadian version of Math and More 78, double click on the **MAM78** folder. If you wish to install the US version, double click on the **MAM78 US** folder.
5. Double click on the SETUP.EXE icon.
6. Click Next on the Welcome window.
7. You will be prompted for your installation type. Select NETWORK (NT/2000, Novell) then click Next to continue.

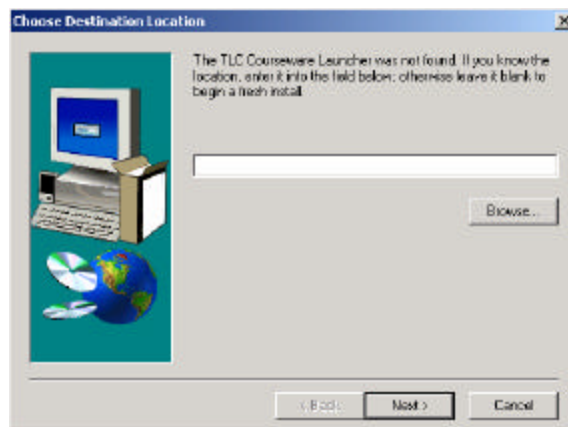


## Math and More 7/8 Installation Guide “Network Installation”

8. You will now be prompted for an installation path for the software. The default location is F:\MAM78. To continue installing the software to this location, click on Next. To change the location, click on Browse (1), type in a new location in the Path box (2), click on OK (3), click Yes to create the new location (if it does not already exist), then click on Next (4).



9. Necessary files will be copied and the TLC Launcher installation will begin. If the TLC Launcher is not found on your system, a screen will pop up asking you to identify its location. **Note:** If the TLC Launcher is found, this will not happen; therefore, skip to the next step. If you know it is not installed, leave the destination box empty, click on Next and move to Step 11.



If it is installed, and you know its location, click on the Browse button, locate the folder, click on OK, then click on Next. Continue to next step.

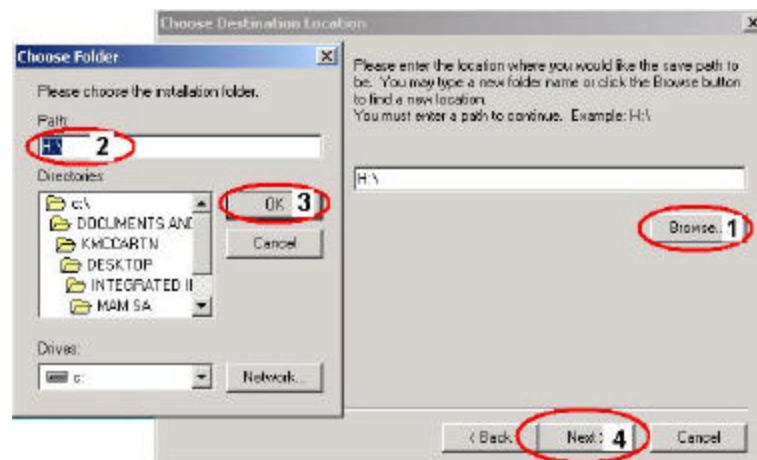
10. If the TLC Launcher was found initially or the specified location from Step 9 contains a copy of the TLC Launcher, one of the three following scenarios will take place:
  - a) If the TLC Launcher that exists on the system is **older** than the one being installed, the TLC Launcher will automatically be updated.

Math and More 7/8 Installation Guide  
“Network Installation”

- b) If the TLC Launcher that exists on the system **matches** the version being installed, the current file will be left.
- c) If the TLC Launcher that exists on the system is **newer** than the one being installed, the current file will be left.

The Student Save Path will not be prompted for in any of these scenarios. The TLC Launcher will use the existing save path. To view the location of the Students Save Path, open up the TLCLauncher.ini file in the Groupwork folder of the TLC Launcher directory. The 6<sup>th</sup> line contains a SavePath=..... statement, that specifies the Students Save Path. Continue to Step 14.

- 11. Click on Next on the Welcome window.
- 12. You will be prompted for a save path. This is the location in which users will store Math and More 78 files. The default path is H:\. To keep the default save path, press Next. To change the location, click on Browse (1), type in a new location in the Path box (2), click on OK (3), click Yes to create the new location (if it does not already exist) then click on Next (4).



- 13. You will be prompted for an installation location for the TLC Launcher. The default location is F:\TLCLauncher. To continue the installation to that path, click on Next. To change the location, click the Browse button and type in a new location, click on OK then click on the Next. The necessary files will be copied.
- 14. Click on Finish on both the TLC Launcher installation and the Math and More 78 windows.
- 15. The final step in the installation process is to copy the Math and More 78 shortcut from within the TLC Launcher directory to a location in which you wish to execute it from. Double click on My Computer on the Windows Desktop.
- 16. Browse to the TLC Launcher directory (the default location being F:\TLCLauncher).
- 17. Highlight the Math and More 78 shortcut, right click on it and select Copy.

Math and More 7/8 Installation Guide  
 “Network Installation”

18. Browse to the location in which you wish to run the courseware from (for example, F:\Shortcuts), right click and select Paste. This will place a shortcut to Math and More 78 in the desired location. The installation is now complete.

### 3a. Shortcut Path to Launch Program

The installation wizard will create a shortcut in the launcher directory. This shortcut will be used for students and teachers to launch the program. You should copy this to the location where your students launch their programs from. This directory is at “F:\TLCLauncher” if you installed to drive F:.

### 3b. Directory Rights/Permissions

| Directory  | Purpose  | Administrator Rights   | Teacher Rights   | Student Rights   |
|--|--|--|--|--|
| Main Launcher Directory<br>F:\TLCLauncher          | Folder for Launcher program files and both the “Groupwork” & “Assignment” Directory.                                 | Novell: “All Rights”<br>Microsoft: “Full Control”  | Novell: Read and File Scan<br>Microsoft: Read & Execute, List folder contents, and Read  | Novell: Read and File Scan<br>Microsoft: Read & Execute, List folder contents, and Read  |
| Groupwork Directory<br>F:\TLCLauncher\Groupwork    | Folder for teachers files that students must read but are not allowed to modify.                                     | Novell: All Rights<br>Microsoft: Full Control  | Novell: Read, Write, Create, Erase, Modify, File Scan<br>Microsoft: Modify, Read & Execute, List folder contents, Read and Write | Novell: Read, Write, Create, Erase, Modify, File Scan<br>Microsoft: Modify, Read & Execute, List folder contents, Read & Write |
| Assignment Directory<br>F:\TLCLauncher\Assignments | Folder for students and groups of students to share files.   | Novell: All Rights<br>Microsoft: Full Control  | Novell: Read, Write, Create, Erase, Modify, File Scan<br>Microsoft: Modify, Read & Execute, List folder contents, Read and Write | Novell: Read and File Scan<br>Microsoft: Read & Execute, List folder contents, and Read  |
| Program Directory                                  | Folder for instructional program executable and data files.  | Novell: All Rights<br>Microsoft: Full Control  | Novell: Read and File Scan<br>Microsoft: Read & Execute, List folder contents, and Read  | Novell: Read and File Scan<br>Microsoft: Read & Execute, List folder contents, and Read  |
| Home Directory<br>H:\                              | Folder where students and teachers will store their personal files and work history. Must be unique for each user. . | Each user should have full rights to their own home directory. It must be root mapped to the same drive letter at logon. |  |  |

### 3c. Troubleshooting Directory Rights/Permissions

If the folder permissions are not set correctly the program will receive a number of errors including ‘Director Player Error’. There is a tool available to test the Rights/Permissions set on the necessary directories. This tool is very helpful in identifying improperly set.

The Admin tool is available from both the Student View and Teacher View screens. By pressing the CTRL-A key sequence (password=’**launcher**’), you activate a permissions test on the user logged into that machine. A Notepad document will open, outlining all of the Rights/Permissions to the TLC Launcher directory (including the Groupwork and Assignments folder), as well as the students save path for that particular user. Ensure that all directories have their permissions correctly set, as stated in the Directory Rights/Permissions section above.

You may be asked to print out the results of this test and fax or email it while talking to Technical Telephone Support (TTS).



```
troubleshoot.txt - Notepad
File Edit Format Help
Groupwork Directory:
Checking access rights on directory: F:\TLCLauncher\groupwork\
Checking directory READ rights...
F:\TLCLauncher\groupwork\testfile.txt found.
The directory: F:\TLCLauncher\groupwork\ is readable.

Checking file READ rights...
File: F:\TLCLauncher\groupwork\testfile.txt
opened successfully for reading.

Checking file WRITE rights...
File: F:\TLCLauncher\groupwork\testfile.txt
opened successfully for writing.

Checking file DELETE rights... Copying testfile.txt to testfile.txt.temp
and deleting it....
Deleting file:
F:\TLCLauncher\groupwork\testfile.txt.temp
succeeded.
```

You may be asked to print out the results of this test and fax or email it while talking to Technical Telephone Support (TTS). Please **include** the following in the text file or on the printout before sending:

1. School Name
2. Your Name and phone number
3. User Name that you were logged in as
4. User Type (Student Teacher or Admin)
5. Computer Name/Number/Location
6. Date and Time
7. Launcher Version Number
8. Program Name and Version Number



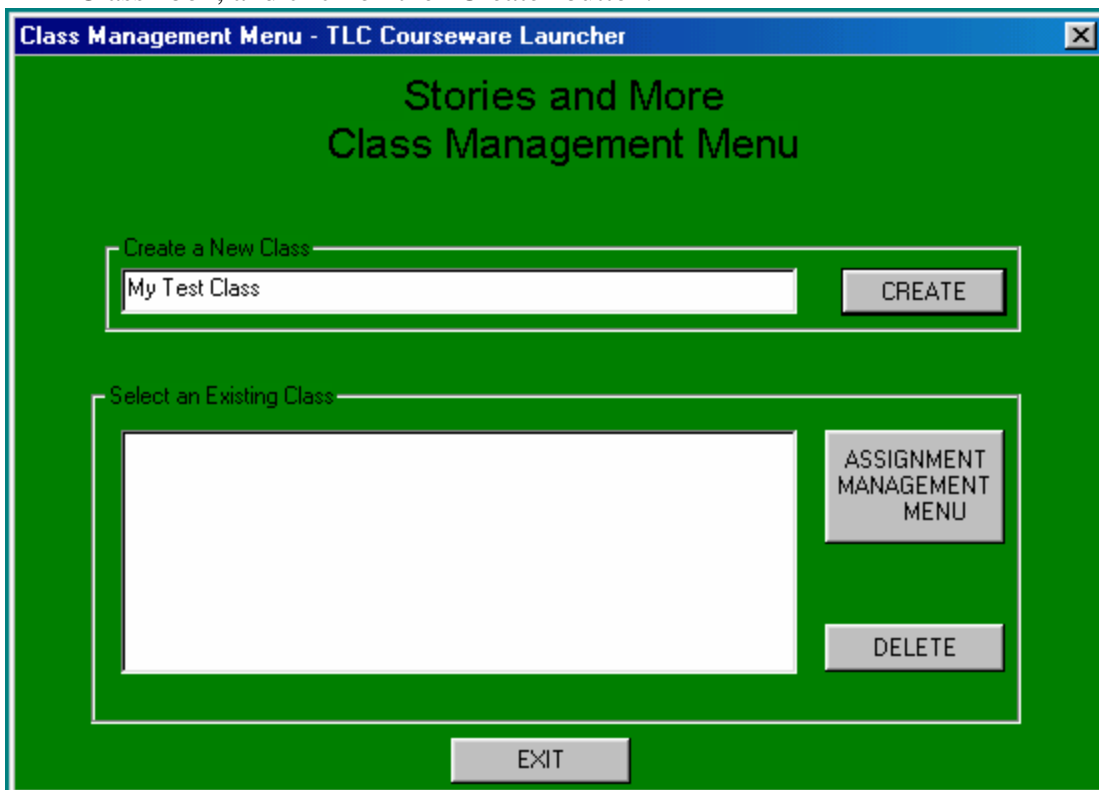
### 3d. Testing Procedures

The following procedures will let you exercise the major functions of the launcher with both a teacher and a student id. This will let you know that the program is installed correctly. Note: Screenshots are from the ‘Stories and More’ program but they will be similar for the program you are testing.

1. Logon with a teacher id.
2. Double click on the appropriate shortcut in the “TLCLauncher” folder. (Note: Or, wherever you made the shortcuts available to your users.)



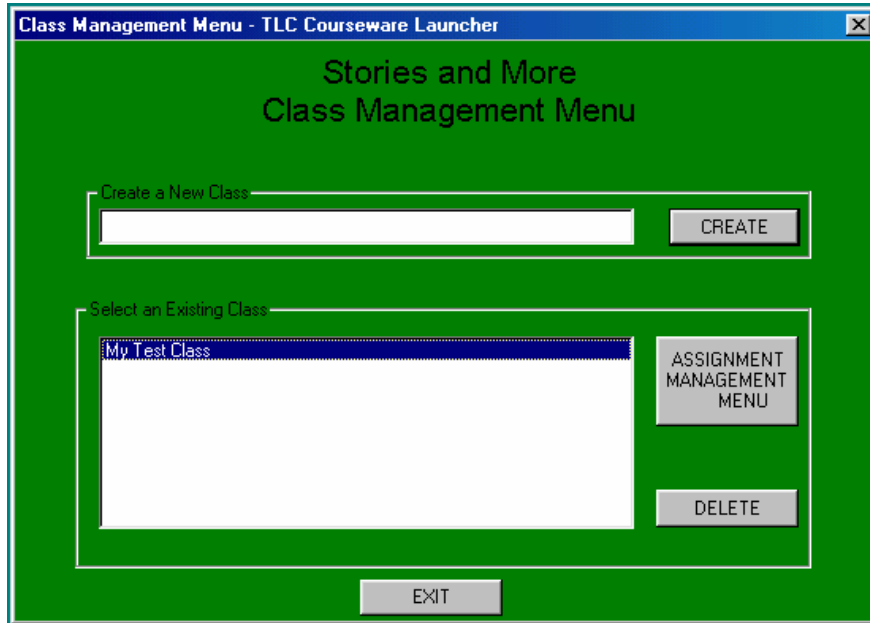
3. The ‘Launcher’ will load and you will see the following screen. This is the Class Management Menu’. Enter the *class name* you wish to use in the “Create a New Class” box, and click on the “Create” button.



Type “My Test Class” and Press “Create”

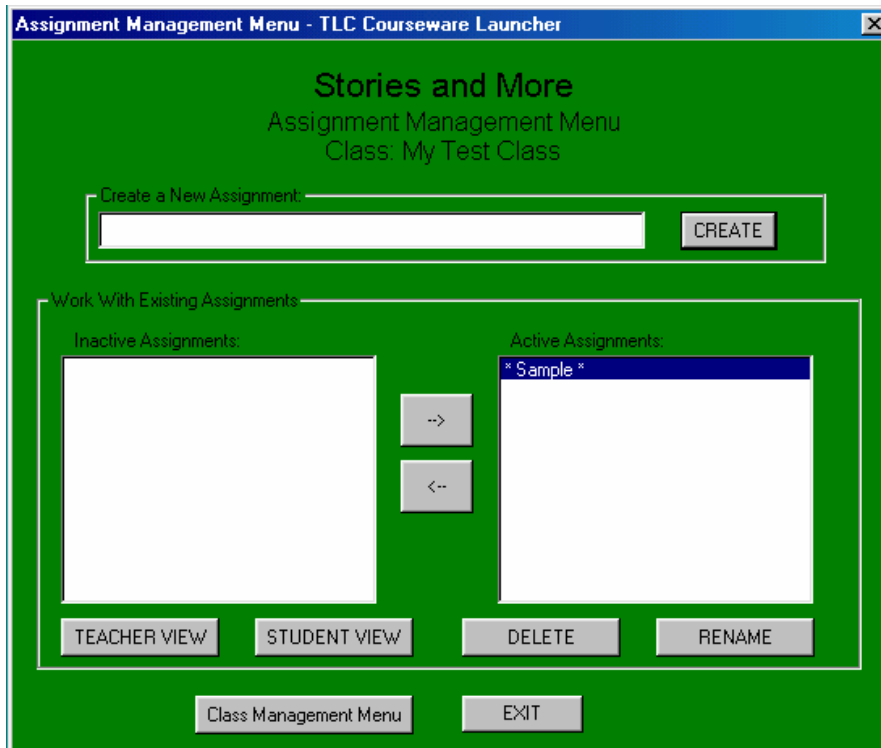
Math and More 7/8 Installation Guide  
“Network Installation”

4. The Class Management Menu will now look like this screen. Click on the *class name* in the “Select an Existing Class” box and press the “Assignment Management Menu” button.



Select a class and press ‘Assignment Management Menu’

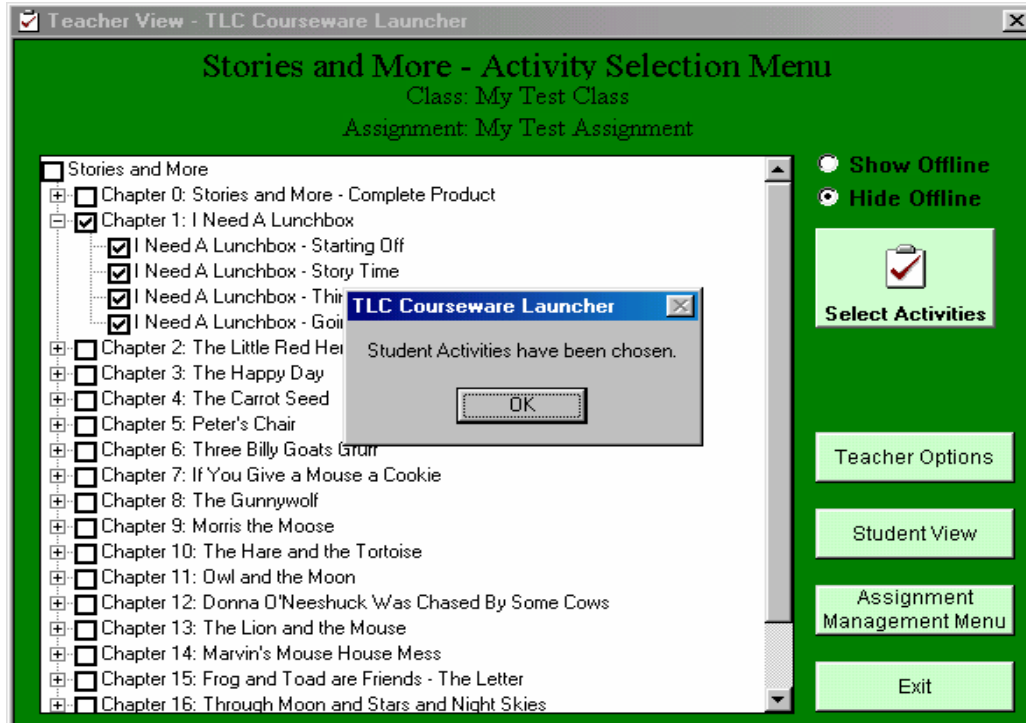
5. In the “Assignment Management Menu”, enter the *name of the assignment* you wish to use and click on create.



Enter “My Test Assignment” and click “Create”

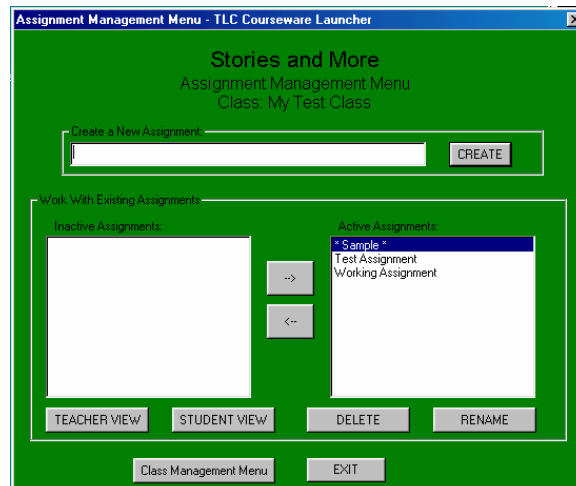
Math and More 7/8 Installation Guide  
“Network Installation”

- The “Activity Selection Menu” will now be visible. Mark your selection and click on the “Select Activities” button. You will get a confirmation message like the one below. Click on “OK” to continue.



Select some activities and press “Select Activities”

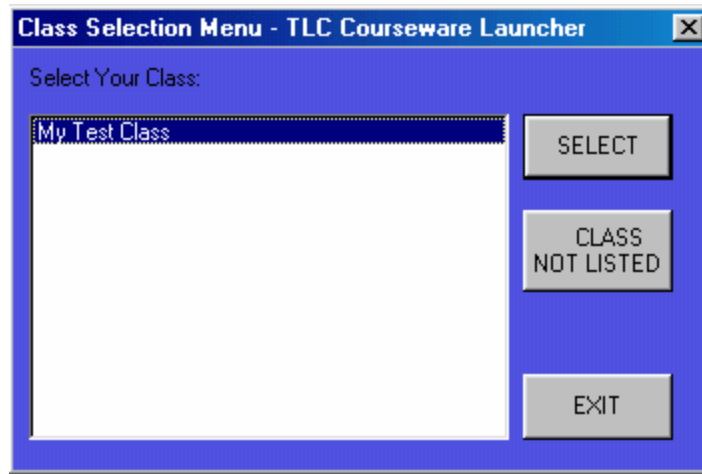
- Repeat step 5 and 6 in order to have a second assignment to test with.
- Click on the “Exit” button.
- Double click on the same courseware shortcut in the “TLCLauncher” folder. (Note: Or, wherever you made the shortcuts available to your users.) You will now see that the application has resumed at the “Assignment Management Menu” for the class created.



Click on “Exit”

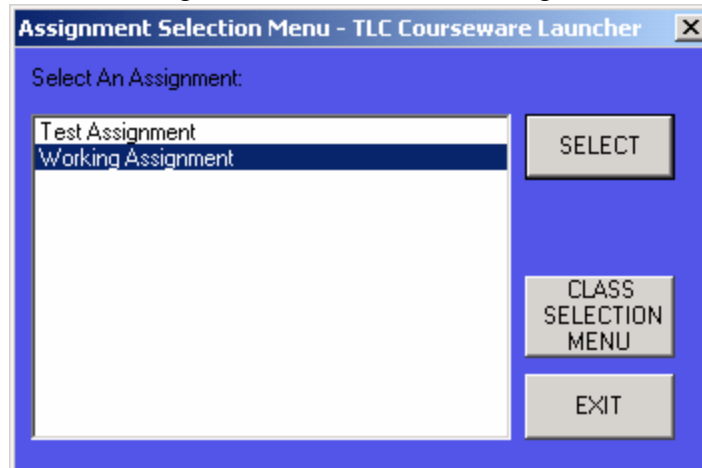
Math and More 7/8 Installation Guide  
“Network Installation”

10. Exit the application menu and logout as the teacher.
11. Login as a student.
12. Choose the appropriate “Class Name” from the “Select Your Class:” box. (Note: there could be a class name for every teacher who creates a class for this subject.) Next, click on the “SELECT” button.



Choose your class and click “SELECT”

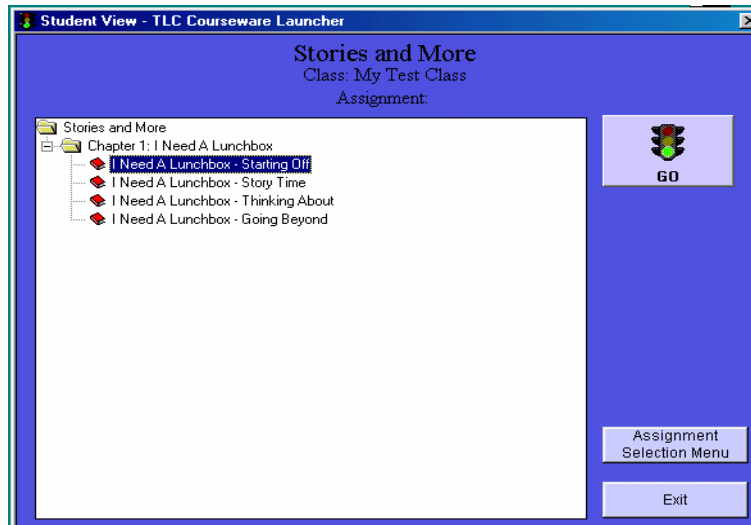
13. You will see the “Assignment Menu” with the assignments that you created.



Choose your assignment and click “SELECT”

Math and More 7/8 Installation Guide  
“Network Installation”

14. You should see a screen similar to this one. Choose the first activity and click on the “GO” button



Select an activity and click “GO”

15. Complete at least one activity and press “GO” to ensure the programs are working. When the activity finishes click on the “Exit” to exit the launcher.
16. Run the application again and the student’s screen should have returned to the “Activity” choice screen like the one above.
17. Exit the application. Your test is finished.

**This Page Intentionally Left Blank.**

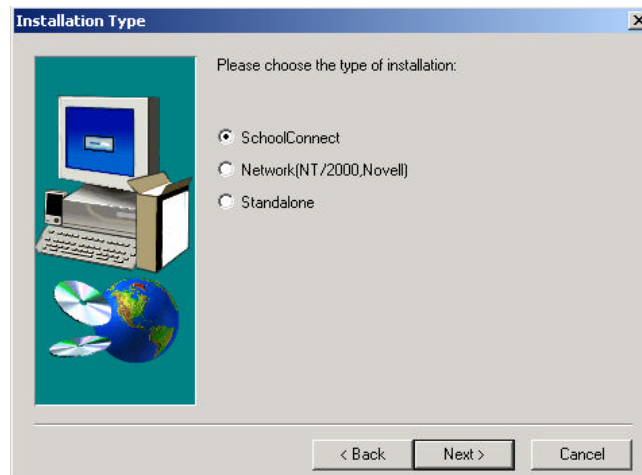
## **4. SchoolConnect Installation**



## 4. SchoolConnect Installation

**Upgrade Note:** If you are upgrading this program from a previous version the existing program directory **‘must’** be removed before this program is installed. The installation process will take many times longer and leave excess files behind if the original version is not removed before this version is installed

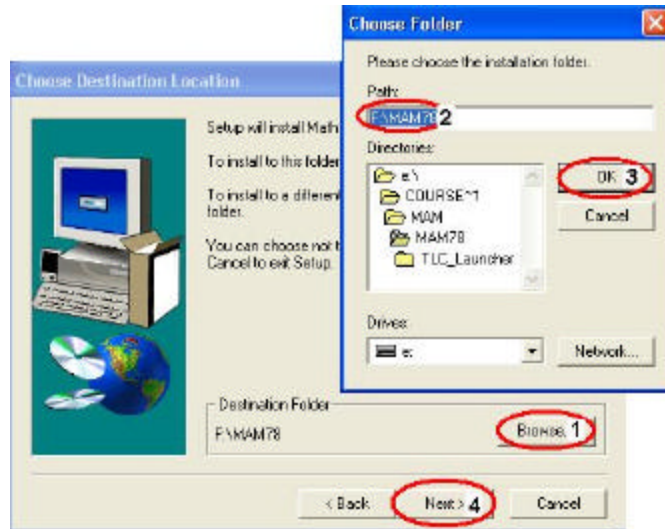
1. Login to a SchoolConnect workstation as Administrator.
2. Double click on My Computer on the Windows Desktop.
3. Double click on the CDROM drive.
4. If you want to install the Canadian version of Math and More 78, double click on the **MAM78** folder. If you want to install the US version, double click on the **MAM78 US** folder.
5. Double click on the SETUP.EXE icon.
6. Click Next on the Welcome window.
7. You will be prompted for your installation type. Select **SCHOOLCONNECT** then click Next to continue.





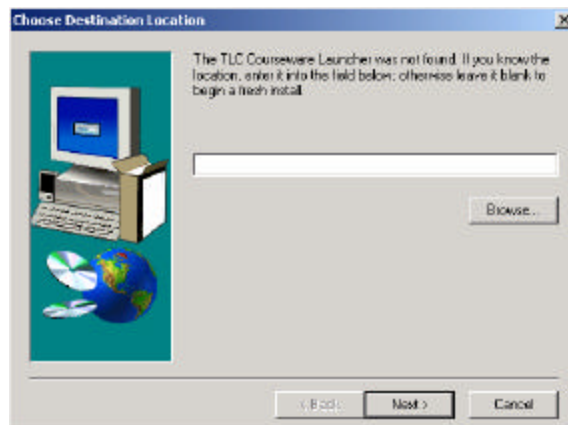
Math and More 7/8 Installation Guide  
“SchoolConnect”

8. You will now be prompted for an installation path for the software. The suggested default location is F:\MAM78. To continue installing the software to this location, click on Next. To change the location, click on Browse (1), type in a new location in the Path box (2), click on OK (3), click Yes to create the new location (if it does not already exist) then click on Next (4).



9. Necessary files will be copied and the TLC Launcher installation will begin. If the TLC Launcher is not found on your system, a screen will pop up asking you to identify its location. **Note:** If the TLC Launcher is found, this will not happen; therefore, skip to the next step.

If you know it is not installed, leave the destination box empty, click on Next and move to Step 11.



If it is installed, and you know its location, click on the Browse button, locate the folder, click on OK, then click on Next. Continue to the next step.

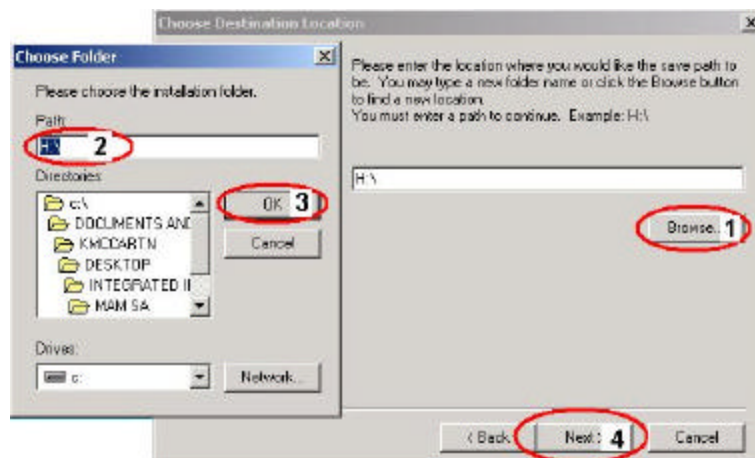
Math and More 7/8 Installation Guide  
“SchoolConnect”

10. If the TLC Launcher was found initially or the specified location from Step 9 contains a copy of the TLC Launcher, one of the three following scenarios will take place:
- d) If the TLC Launcher that exists on the system is **older** than the one being installed, the TLC Launcher will automatically be updated.
  - e) If the TLC Launcher that exists on the system **matches** the version being installed, the current file will be left.
  - f) If the TLC Launcher that exists on the system is **newer** than the one being installed, the current file will be left.

The Student Save Path will not be prompted for in any of these scenarios. The TLC Launcher will use the existing save path. To view the location of the Students Save Path, open up the TLCLauncher.ini file in the Groupwork folder of the TLC Launcher directory. The 6<sup>th</sup> line contains a SavePath=..... statement, that specifies the Students Save Path. Continue to Step 14.

11. Click on Next on the Welcome window.

12. You will be prompted for a save path. This is the location in which users will store Math and More 78 files. The default path is H:\. To keep the default save path, press Next. To change the location, click on Browse (1), type in a new location in the Path box (2), click on OK (3), click Yes to create the new location (if it does not already exist) then click on Next (4).



Math and More 7/8 Installation Guide  
“SchoolConnect”

13. You will be prompted for an installation location for the TLC Launcher. The default location is F:\TLCLauncher. To continue the installation to that path, click on Next. To change the location, click the Browse button and type in a new location, click on OK then click on the Next. The necessary files will be copied.
14. Click on Finish on both the TLC Launcher installation and the Math and More 78 windows.
15. The final step in the installation process is to copy the Math and More 78 shortcut from within the TLC Launcher directory to a location in which you wish to execute it from. Double click on My Computer on the Windows Desktop.
16. Browse to the TLC Launcher directory (the default location being F:\TLCLauncher).
17. Highlight the Math and More 78 shortcut, right click on it and select Copy.
18. Double click on the DROP ICONS HERE FOR TEACHER DISTRIBUTION icon on the Administrators Desktop, right click and select Paste. The installation is now complete.