



&



**Software Installation Guide for  
Nature of Science: Through the Woods  
Guide and Visit Programs**

# Table of Contents

1.0 Introduction.....	3
1.1 Who should install this program: .....	3
1.2 Technical Support in the U.S.:.....	3
1.3 Program Overview .....	3
1.4 Four Phases to Installation: .....	4
1.5 ‘Node’ Install vs. ‘Server’ Install.....	5
1.6 Program Requirements.....	5
2.0 Installing the Programs .....	6
2.1 SERVER Install of Woods Guide and Woods Visit.....	6
2.2 NODE Install of Woods Guide and Woods Visit .....	7
3.0 Create Shortcuts .....	8
4.0 Testing.....	9

## **1.0 Introduction**

### **1.1 Who should install this program:**

This manual is for the Technician who will be installing programs on your Local Area Network. It is assumed that your Technician has training and experience installing programs under your version of Microsoft Windows operating systems (Win 95, 98 or Me) and has training and experience installing and maintaining programs under your Network Operating System (NOS) like Novell Netware, Microsoft Windows NT Server or Microsoft Windows 2000 Server.

### **1.2 Technical Support in the U.S.:**

Technical support for this program is provided by Bright Blue Software in the United States. If you are a school or district in the United States and require assistance during the installation of this program or during the first year of operation you should call Bright Blue Software. After the first year customers are asked to purchase Technical Telephone Support (TTS) on an annual basis. Pricing for TTS may be found at [www.brightbluesoftware.com](http://www.brightbluesoftware.com). One TTS contract covers a school building for all programs purchased from a Value Added Resellers (VARs) of Bright Blue Software. Your first year of TTS is included for FREE with the purchase of this program.

TTS covers the use, operation, installation and maintenance of this program. If you require assistance for this program please call the TTS phone line. The TTS phone line can be found at [www.brightbluesoftware.com](http://www.brightbluesoftware.com). The initial number is: (866) 690-8090 and is expected to change in October 2001. Certain program updates will be provided at the Bright Blue Software web site. You should check this web site before you install this program to see if there are any program updates available. If problems are found then fixes or updates will be available for download.

### **1.3 Program Overview**

This program comes in two parts. The first is the 'Nature of Science: Through the Woods Guide' and 'Nature of Science: Through the Woods Visit'. These programs will be called Woods Guide and Woods Visit in this documentation. The Woods Visit allows students to take virtual field trips to a woods environment. Then the students will use the Woods Guide program to learn more about the plants and animals they find. The Woods Guide allows students to build projects that allow them to demonstrate their understanding of the woods.

Both the Woods Guide and Woods Visit have components that must be installed to every workstation that will use this instructional program. This 'Node' install is mandatory. Both the Woods Guide and Woods Visit have 'Server' install components that may be done once on the server and do not need to be repeated on every workstation.

This instructional program was written to operate on a Local Area Network (LAN). The LAN may be Windows NT Server 4, Windows 2000 Server, or Novell Netware (4.x and 5.x). In rare cases the program may be installed to a stand-alone workstation to accommodate a specific need. For example, if a school is loading a laptop computer for a homebound student or if there is a classroom with insufficient bandwidth to accommodate full motion video. In these cases the program may be installed to a workstations hard drive.

Instructions are provided to install the program under to a networked environment. Since every LAN will have slightly different operating environment it is the responsibility of the Technician who is installing this program to customize the installation procedure to accommodate your LANs specific needs.

## **1.4 Four Phases to Installation:**

Installing this program is a Four-step process.

1. Server Install of Woods Guide and Woods Visit
2. Node install of Woods Guide and Woods Visit
3. Create shortcuts to launch the program.
4. Test the Program.

## 1.5 'Node' Install vs. 'Server' Install

Phase 1 may be considered the 'Server' install since it only has to be performed once to the file server. It is not necessary to repeat these steps

On a network, phase 2 'Node install of Woods Guide and Woods Visit' needs to be repeated on every workstation that will be using the program. This 'Node' install must be done to every workstation or may be incorporated into a 'workstation image' before it is replicated to every workstation.

Phase 3 involves creating shortcuts that will be used to launch the programs. These may be created on the server or the workstation. If you choose to have the icons on the workstation then they must be copied to every workstation.

## 1.6 Program Requirements

1. Workstation Operating System: Windows 95 OSR2, Windows 98 Second Edition, or Windows Me.

Note: Windows NT Workstation and Windows 2000 Professional are not on the supported list. Testing has identified problems that prevent the Guide program from operating correctly. If this issue is resolved then updates can be found on the [www.brightbluesoftware.com](http://www.brightbluesoftware.com) web site.

2. Network Operating System: Novell Netware (4.x or 5.x), Microsoft Windows NT Server 4.0 or Microsoft Windows 2000 Server.
3. Micro Processor:
  - a. Woods Guide: Pentium 60 MHz or better
  - b. Woods Visit: Pentium 133 MHz or better
4. Memory: 32 MB or better
5. Disk Space on file server: 880 MB for the program files and 200 KB for each student that will use the program.
6. Network and Server: Woods Visit makes use of full motion video and audio. These multimedia data streams take 2.5 Mb (Million bits per second) of hard disk, server and network bandwidth. Your server, network and hard disks arrays should be designed to handle this load for the expected number of workstations. The server should be plugged into a 100Mb or 1Gb switched port. RAID 5 arrays are also recommended.
7. Windows Media Player V 6.01 or later. Windows Media Player may already be on your workstations. You should ensure that Version 6.01 or higher is installed. If it is not, you may download it from [www.microsoft.com](http://www.microsoft.com) or you can select to install it with Microsoft Internet Explorer V4.x or V5.x.

## 2.0 Installing the Programs

### 2.1 SERVER Install of Woods Guide and Woods Visit

#### Assumptions:

1. You have a network drive mapped to the server where you will be installing the program. This drive must be the same letter for all users who will be using these programs. These instructions describe the process of installing to drive 'F:'. If your network uses another drive letter then it is the responsibility of the installer to make the proper modifications.
2. You have a network drive mapped to the server where students will be saving their work. This drive must be the same letter for all users who will be using these programs. The default location for student files is 'H:'.

#### Instructions:

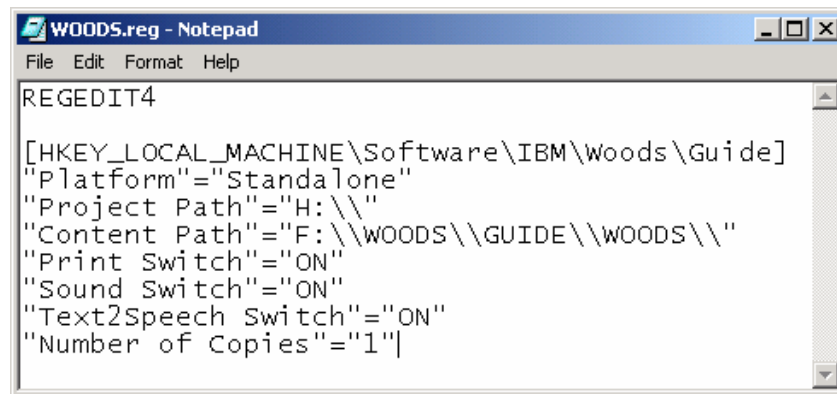
1. From a workstation, log on to the network as an Administrator (most powerful user with all rights)
  2. Verify that you have 880 MB of disk space on drive F:
  3. Create the following directories on drive F:
    - F:\Woods
    - F:\Woods\Visit
    - F:\Woods\Guide
  4. Copy the contents of the CDs to the Server.
    - Copy the ENTIRE contents of Woods Guide to F:\Woods\Guide
    - Copy the ENTIRE contents of Woods Visit to F:\Woods\Visit
- Hint: You may use Windows Explorer or XCOPY to copy these files.

## 2.2 NODE Install of Woods Guide and Woods Visit

1. Verify that a Windows Media Player V6.01 or later is installed.
2. Double click on the Woods.reg file. The file is located at F:\Woods\Guide\Registry\woods.reg. This file will update registry components to ensure that the guide and visit programs will look to F:\Woods for the multimedia files.

Note: If you are not using drive F: for the program or drive H: for the students work directory then you must edit this file using the following steps:

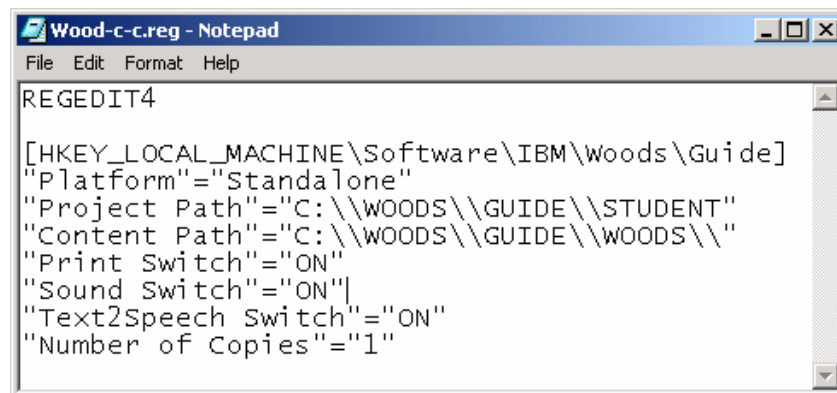
- Set this file's attributes to not be read only.
- Edit the file with notepad to change F: to the drive letter you require. For example, if you will be using drive C: then you will change every occurrence of F: to C: in the file.
- Run this file to make the registry changes.



```
WOODS.reg - Notepad
File Edit Format Help
REGEDIT4

[HKEY_LOCAL_MACHINE\Software\IBM\Woods\Guide]
"Platform"="Standalone"
"Project Path"="H:\\\"
"Content Path"="F:\\WOODS\\GUIDE\\WOODS\\"
"Print Switch"="ON"
"Sound Switch"="ON"
"Text2Speech Switch"="ON"
"Number of Copies"="1"
```

Sample WOODS.reg file



```
Wood-c-c.reg - Notepad
File Edit Format Help
REGEDIT4

[HKEY_LOCAL_MACHINE\Software\IBM\Woods\Guide]
"Platform"="Standalone"
"Project Path"="C:\\WOODS\\GUIDE\\STUDENT"
"Content Path"="C:\\WOODS\\GUIDE\\WOODS\\"
"Print Switch"="ON"
"Sound Switch"="ON"
"Text2Speech Switch"="ON"
"Number of Copies"="1"
```

Sample registry file for C-Drive installation

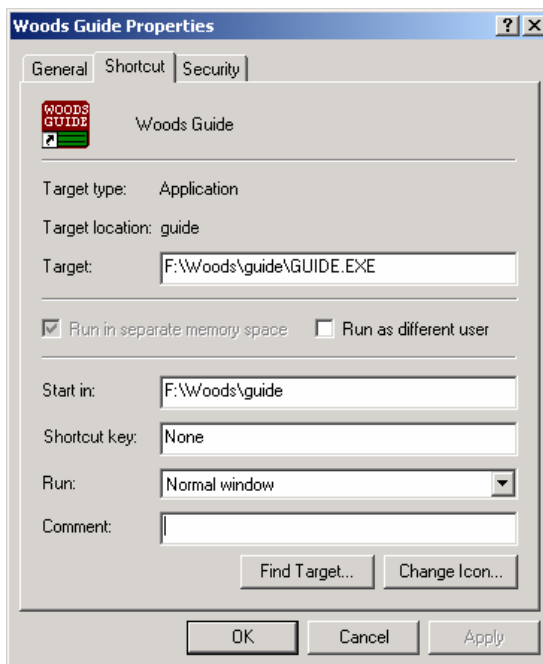
### 3.0 Create Shortcuts

Assumption: You are performing an install to drive 'F:'. If you are installing to another drive letter you will have to make the appropriate drive letter modification.

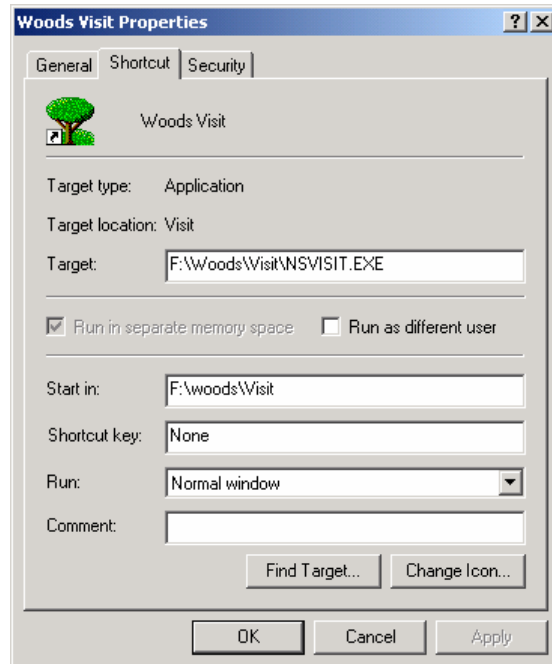
1. Shortcuts are provided in f:\woods\guide\shortcuts. Copy these shortcuts to where you store shortcuts for your students to use.



Woods Shortcuts



Woods Guide Shortcut



Woods Visit Shortcut



## 4.0 Testing

The best way to verify that the programs are to launch them and verify that they load and operate.

1. Login with a teacher user ID.



2. Double-click on the Woods Guide Shortcut
  - a. You will see a screen that says 'IBM K-12'. Click the mouse once to continue.
  - b. You will see a screen that says 'Children's Television Workshop'. Click the mouse to continue.
  - c. You will see a screen that says 'Woods Guide'. Click the mouse to continue.
  - d. You will see a menu that lists activities the students can run. The first item in the list should be 'Explore'.



- e. You can click on the EXIT sign to exit.



3. Double-click on the Woods Visit Shortcut
  - a. A series of introductory screens will be presented that lead you to a cabin in the woods. The video will then stop at the cabin.
  - b. Move your mouse over the tent flap (door). You should see 'sparkles'. Click on the sparkling tent flap.
  - c. You will enter the tent.
  - d. You can click on the EXIT sign to exit.

4. Repeat Steps 2 and 3 with a student user ID.