



&



Software Installation Guide for Stories and More 1

**Document Version 3.0.1
For Software Version 3.0.1**

Index:

- 1. Introduction and Technical Notes**
- 2. Stand Alone Installation**
- 3. Network Installation (Microsoft or Novell)**
- 4. SchoolConnect Installation**

1. Introduction and Technical Notes

Who should install this program:

This manual is for the Technician who will be installing programs on your Local Area Network. It is assumed that your Technician has training and experience installing programs under your version of Microsoft Windows operating systems (Win 95, 98, NT, 2000 Pro or XP Pro) and has training and experience installing and maintaining programs under your Network Operating System (NOS) like Novell Netware, Microsoft Windows NT Server or Microsoft Windows 2000 server.

Technical Support in the U.S.:

Bright Blue Software in the United States provides technical support for this program. If you are a school or district in the United States and require assistance during the installation of this program or during the first year of operation you should call Bright Blue Software support at 1-866-690-6748. After the first year customers are asked to purchase Technical Telephone Support (TTS) on an annual basis. Pricing for TTS may be obtained by calling 1-866-690-8090 or found at www.brightbluesoftware.com. One TTS contract covers a school building for all programs purchased from a Value Added Resellers (VARs) of Bright Blue Software. Your first year of TTS is included for FREE with the purchase of this program.

TTS covers the use, operation, installation and maintenance of this program. If you require assistance for this program please call the TTS phone line 1-866-690-6748. Certain program updates will be provided at the Bright Blue Software web site at www.brightbluesoftware.com. You should check this program before you install this program to see if there are any program updates available. As problems are found and fixed the updates will be available for download.

Program Requirements:

1. Workstation Operating System: Windows 95 OSR2, Windows 98 Second Edition, Windows NT 4 Workstation with Service Pack 4, Windows 2000 Professional with Service Pack 2 installed or Windows XP Professional.
2. Network Operating System: Novell Netware (4.x or Newer), Microsoft Windows NT Server 4.0 or Newer.
3. Micro Processor: Pentium 60 MHz or better
4. Video Resolution: 800 x 600 with 16 bit color or better
5. Memory: 32 MB or better (for Windows 98)
6. Disk Space on file server or standalone workstation: 1.1 GB for the program files and 200 KB for each student that will use the program.

The Launcher:

This instructional program is used in conjunction with a program called the Launcher. Its purpose is to allow teacher to set program options and personalize the instruction units to suite their curriculum and lesson plans. This version of the launcher is installed to the file server (network and SchoolConnect) and does not require a node installation at each workstation. If previous versions of the launcher exist on your workstations and server they do not need to be removed in order for this new version to work properly.

Stories and More 1 Installation Guide “Introduction”

Notes:

1. Launcher – If previous versions of the launcher exist on your workstations and server they do NOT need to be removed in order for this new version to work properly.
2. Program Directory – If you are upgrading this program from a previous version the existing program directory should be removed before this program is installed. The installation process will take many times longer and leave excess files behind if the original version is not removed before this version is installed.
3. Home Directory – Each user is expected to have a home directory on network installations. This is the directory where their student’s work history and personal files will be stored. Each user is expected to have a unique network logon and personal home directory root mapped to the same location at logon.
4. Shortcuts - The installation wizard will create a shortcut in the launcher directory. This shortcut will be used for students and teachers to launch the program. You should copy this to the location where your students launch programs.
5. Network Rights for Launcher – If you are installing this program to a network (Microsoft or Novell) then special directory rights must be set for certain directories. The installation program does NOT perform this function. If you are not familiar with setting directory rights then you should request the assistance of your local network technician or call Bright Blue Software Technical Telephone Support (TTS) at 1-866-690-6748. This is a one time operation. Once the rights are correctly set the launcher will maintain all the directories and files needed for normal operation.

Directory	Purpose	Administrator Rights	Teacher Rights	Student Rights
Main Launcher Directory F:\TLCLauncher	Folder for Launcher program files and both the “Groupwork” & “Assignment” Directory.	Novell: “All Rights” Microsoft: “Full Control”	Novell: Read and File Scan Microsoft: Read & Execute, List folder contents, and Read	Novell: Read and File Scan Microsoft: Read & Execute, List folder contents, and Read
Groupwork Directory F:\TLCLauncher\Groupwork	Folder for teachers files that students must read but are not allowed to modify.	Novell: All Rights Microsoft: Full Control	Novell: Read, Write, Create, Erase, Modify, File Scan Microsoft: Modify, Read & Execute, List folder contents, Read and Write	Novell: Read, Write, Create, Erase, Modify, File Scan Microsoft: Modify, Read & Execute, List folder contents, Read & Write
Assignment Directory F:\TLCLauncher\Assignments	Folder for students and groups of students to share files.	Novell: All Rights Microsoft: Full Control	Novell: Read, Write, Create, Erase, Modify, File Scan Microsoft: Modify, Read & Execute, List folder contents, Read and Write	Novell: Read and File Scan Microsoft: Read & Execute, List folder contents, and Read
Program Directory	Folder for instructional program executable and data files.	Novell: All Rights Microsoft: Full Control	Novell: Read and File Scan Microsoft: Read & Execute, List folder contents, and Read	Novell: Read and File Scan Microsoft: Read & Execute, List folder contents, and Read
Home Directory H:\	Folder where students and teachers will store their personal files and work history. Must be unique for each user. .	Each user should have full rights to their own home directory. It must be root mapped to the same drive letter at logon.		

This Page Intentionally Left Blank.

2. Stand Alone Installation



2. Stand Alone Installation.

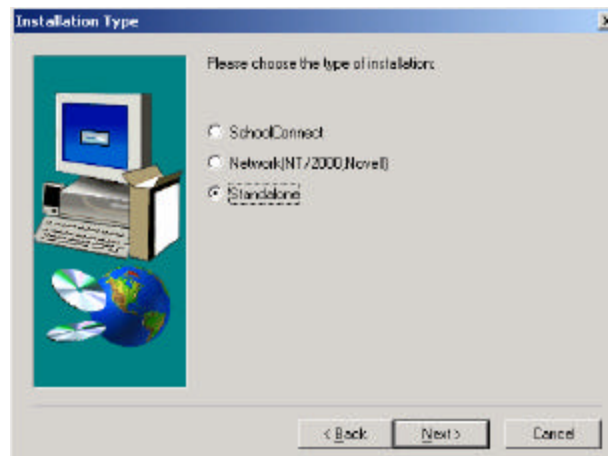
Important:

Upgrade Note: If you are upgrading this program from a previous version the existing program directory **must** be removed before this program is installed. The installation process will take many times longer and leave excess files behind if the original version is not removed before this version is installed

If you have an older version of the TLC Launcher and plan on leaving it on your system, please note that you **must** install this version of the TLC Launcher to a **separate** directory. Shortcuts that are created are different from the ones currently existing (if any) and therefore run differently.

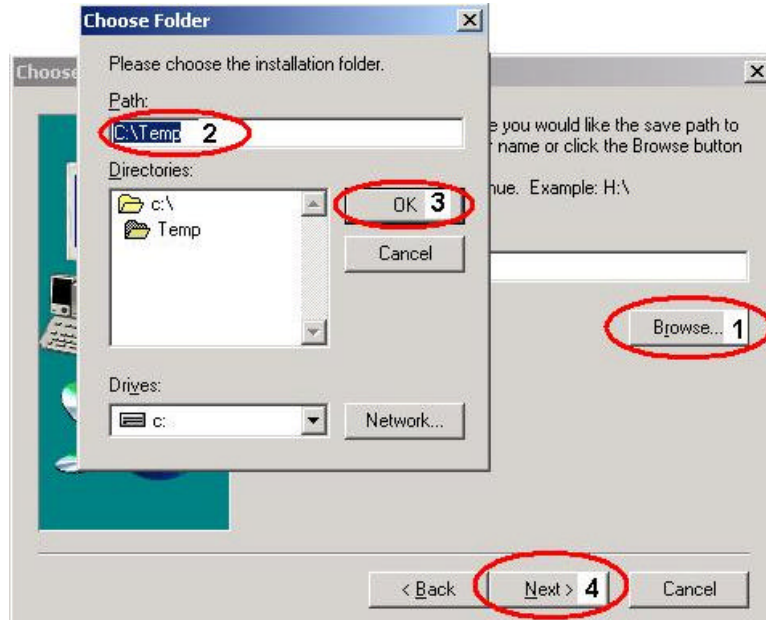
IBM ViaVoice **must** be installed on **every** workstation in order for Stories and More 1 to run properly. To install ViaVoice on each workstation, see the “Installing IBM ViaVoice” section, located near the end of this document.

1. Insert the Stories and More 1 CD into the CDROM drive and double click on My Computer on the Windows Desktop.
2. Double click on the CDROM drive.
3. Double click on the SETUP.EXE icon.
4. Click Next on the Welcome window.
5. You will be prompted for your installation type. Select STANDALONE then click Next to continue.

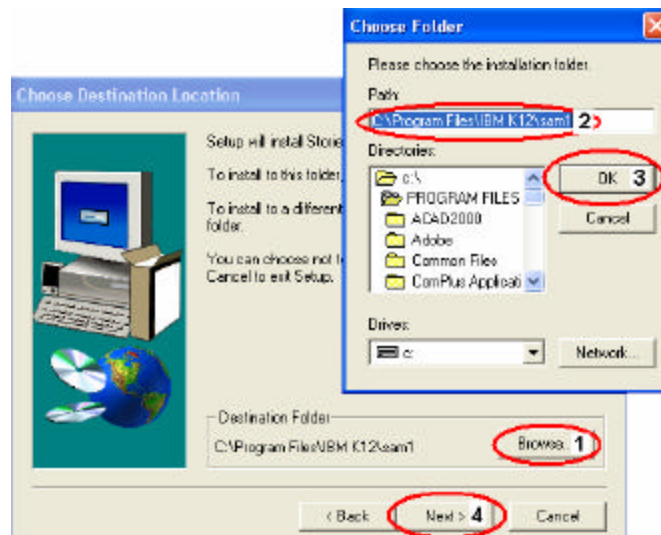


Stories and More 1 Installation Guide “Stand Alone Installation”

- You will be prompted for a save path. This is the location in which users will store Stories and More 1 files. The default save path is C:\Temp. To keep the default save path, click Next. To change the location, click on Browse (1), type in a new location in the Path box (2), click on OK (3), click Yes to create the new location (if it does not already exist) then click on Next (4).

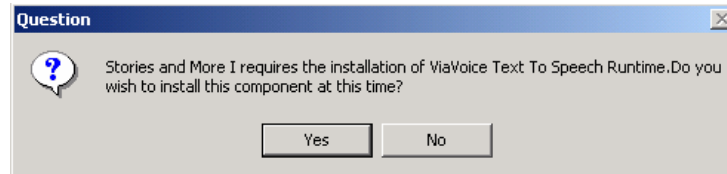


- You will now be prompted for an installation path for the software. The default location is C:\Program Files\IBM K12\Sam1. To continue installing to this location, click Next. To change the location, click on Browse (1), type in a new location in the Path box (2), click on OK (3), click Yes to create the new location (if it does not already exist) then click on Next (4).

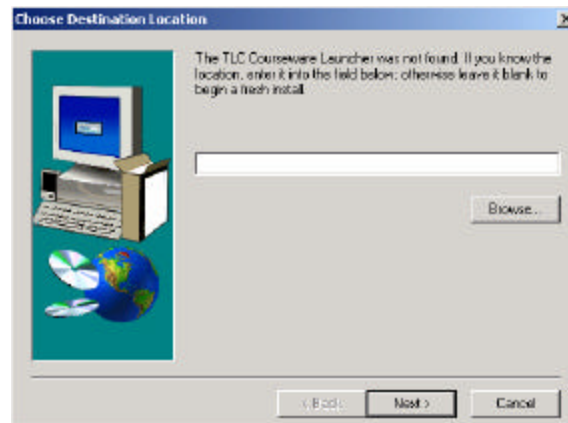


Stories and More 1 Installation Guide “Stand Alone Installation”

8. Necessary files will be copied and unless you have ViaVoice Text to Speech Runtime installed on your system, you will receive a message asking if you want to install this component. Click “Yes” to install it.



9. A “ViaVoice Runtime” window will appear. Click “Next”.
10. An “IBM ViaVoice Technology-ViaVoice TTS” window will appear. Click “Yes” to accept the license agreement.
11. A “Choose Destination Location” window will appear. Click “Next” to accept the default location for installation.
12. A “Setup Complete” window will appear. Click “Finish” to complete the ViaVoice installation.
13. The TLC Launcher installation will begin. If the TLC Launcher is not found on your system, a screen will pop up asking you to identify its location. **Note:** If the TLC Launcher is found, this will not happen; therefore, skip to the next step. If you know it is not installed, leave the destination box empty, click on Next and move to



If it is installed, and you know its location, click on the Browse button, locate the folder, click on OK, and then click on Next. Continue to the next step.

Stories and More 1 Installation Guide
“Stand Alone Installation”

14. If the TLC Launcher was found initially or the specified location from Step 13 contains a copy of the TLC Launcher, one of the three following scenarios will take place:
 - a) If the TLC Launcher that exists on the system is **older** than the one being installed, the TLC Launcher will automatically be updated.
 - b) If the TLC Launcher that exists on the system **matches** the version being installed, the current file will be left.
 - c) If the TLC Launcher that exists on the system is **newer** than the one being installed, the current file will be left.

The Student Save Path will not be prompted for in any of these scenarios. The TLC Launcher will use the existing save path. To view the location of the Students Save Path, open up the TLCLauncher.ini file in the Groupwork folder of the TLC Courseware Launcher directory. The 6th line contains a SavePath=..... statement, that specifies the Students Save Path. Continue to Step 17.

15. Click Next on the Welcome Window.
16. You will be prompted for an installation location for the TLC Launcher. The default location is C:\Program Files\TLC Courseware Launcher. To continue the installation to that path, click on Next. To change the location, click the Browse button and type in a new location, click on OK, and then click on Next. The necessary files will be copied.
17. Click Finish on both the TLC Launcher installation and the Stories and More 1 installation windows.
18. The final step in the installation process is to copy the Stories and More 1 shortcut from within the Launcher directory to a location in which you wish to execute it from. Double click on My Computer on the Windows Desktop.
19. Browse to the Launcher directory (the default location being C:\Program Files\TLC Courseware Launcher).
20. Highlight the Stories and More 1 shortcut, right click on it and select Copy.
21. Browse to the location in which you wish to run the courseware from (for example, the Windows Desktop), right click and select Paste. This will place a shortcut to Stories and More 1 in the desired location. The installation is now complete.

Stories and More 1 Installation Guide
“Stand Alone Installation”

This Page Intentionally Left Blank.

3. Network Installation (Microsoft or Novell)

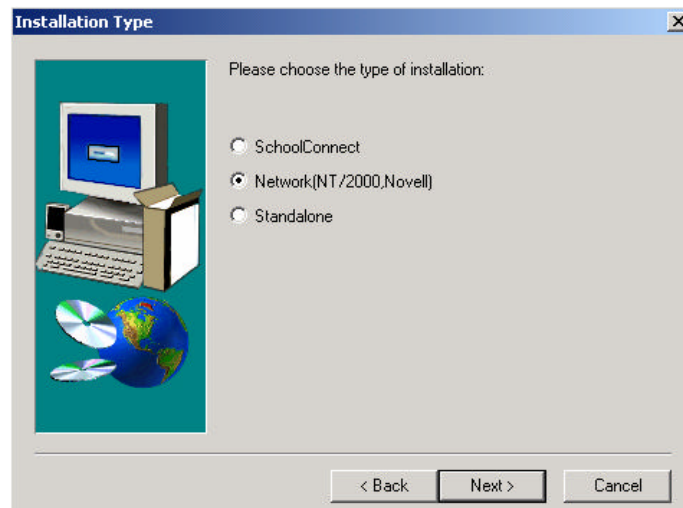


3. Network Installation (Microsoft or Novell)

Upgrade Note: If you are upgrading this program from a previous version the existing program directory **must** be removed before this program is installed. The installation process will take many times longer and leave excess files behind if the original version is not removed before this version is installed

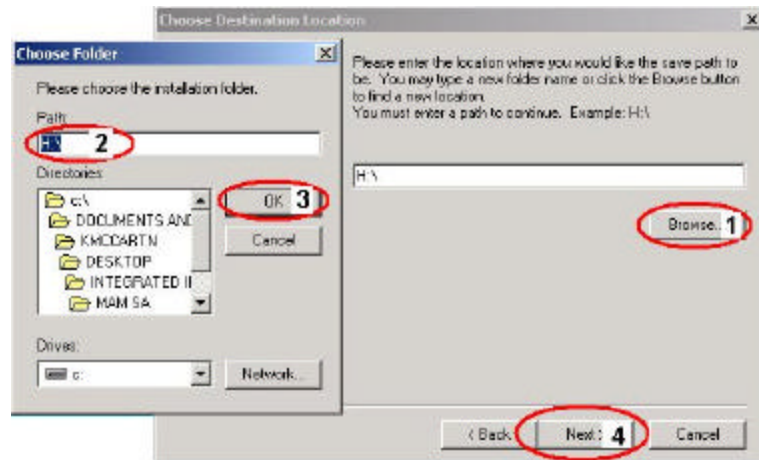
Important: Once you have completed a Network installation of the Launcher, you **MUST** apply folder Rights/Permissions to two of the Launcher directories. See the Directory Rights/Permissions section necessary settings.

1. Login to one of the networked workstations as a user with administrative privileges.
2. Insert the Stories and More 1 CD into the CDROM drive and double click on My Computer on the Windows Desktop.
3. Double click on the CDROM drive.
4. Double click on the SETUP.EXE icon.
5. Click Next on the Welcome window.
6. You will be prompted for your installation type. Select NETWORK (NT/2000, Novell) then click Next to continue.

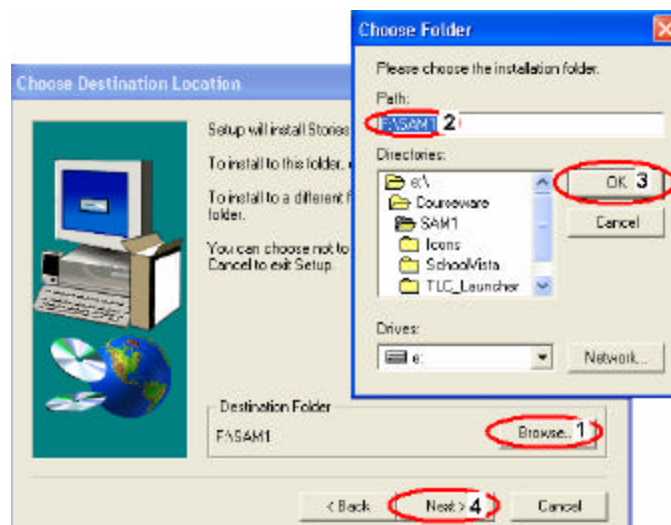


Stories and More 1 Installation Guide “Network Installation”

7. You will be prompted for a save path. This is the location in which users will store Stories and More 1 files. The default path is H:\. To keep the default save path, press Next. To change the location, click on Browse (1), type in a new location in the Path box (2), click on OK (3), click Yes to create the new location (if it does not already exist) then click on Next (4).

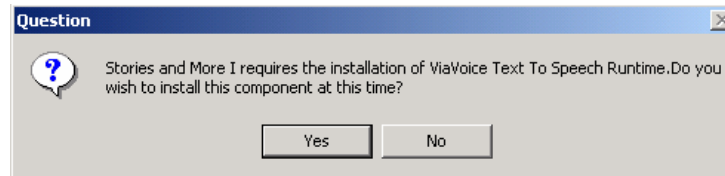


8. You will now be prompted for an installation path for the software. The default location is F:\SAM1. To continue installing the software to this location, click Next. To change the location, click on Browse (1), type in a new location in the Path box (2), click on OK (3), click Yes to create the new location (if it does not already exist), then click on Next (4).

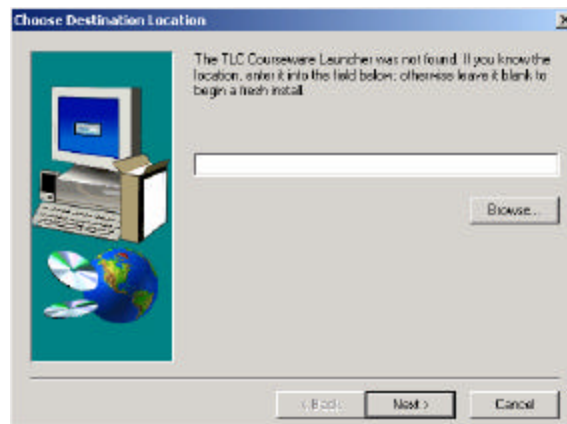


9. Necessary files will be copied and unless you have ViaVoice Text to Speech Runtime installed on your system, you will receive a message asking if you want to install this component. Click “Yes” to install it.

Stories and More 1 Installation Guide “Network Installation”



10. A “ViaVoice Runtime” window will appear. Click “Next”.
11. An “IBM ViaVoice Technology-ViaVoice TTS” window will appear. Click “Yes” to accept the license agreement.
12. A “Choose Destination Location” window will appear. Click “Next” to accept the default location for installation.
13. A “Setup Complete” window will appear. Click “Finish” to complete the ViaVoice installation.
14. The TLC Launcher installation will begin. If the TLC Launcher is not found on your system, a screen will pop up asking you to identify its location. **Note:** If the TLC Launcher is found, this will not happen; therefore, skip to the next step. If you know it is not installed, leave the destination box empty, click on Next and move to Step 16.



If it is installed, and you know its location, click on the Browse button, locate the folder, click on OK, then click on Next. Continue to next step.

15. If the TLC Launcher was found initially or the specified location from Step 14 contains a copy of the TLC Launcher, one of the three following scenarios will take place:
 - a) If the TLC Launcher that exists on the system is **older** than the one being installed, the TLC Launcher will automatically be updated.
 - b) If the TLC Launcher that exists on the system **matches** the version being installed, the current file will be left.

Stories and More 1 Installation Guide
“Network Installation”

- c) If the TLC Launcher that exists on the system is **newer** than the one being installed, the current file will be left.

The Student Save Path will not be prompted for in any of these scenarios. The TLC Launcher will use the existing save path. To view the location of the Students Save Path, open up the TLCLauncher.ini file in the Groupwork folder of the TLC Launcher directory. The 6th line contains a SavePath=..... statement, that specifies the Students Save Path. Continue to Step 17.

16. Click on Next on the Welcome window.
17. Click on Finish on both the Launcher installation and the Stories and More 1 windows.
18. The final step in the installation process is to copy the Stories and More 1 shortcut from within the Launcher directory to a location in which you wish to execute it from. Double click on My Computer on the Windows Desktop.
19. Browse to the Launcher directory (the default location being F:\TLCLauncher).
20. Highlight the Stories and More 1 shortcut, right click on it and select Copy.
21. Browse to the location in which you wish to run the courseware from (for example, F:\Shortcuts), right click and select Paste. This will place a shortcut to Stories and More 1 in the desired location. The installation is now complete.

Stories and More 1 Installation Guide
 “Network Installation”

3a. Shortcut Path to Launch Program

The installation wizard will create a shortcut in the launcher directory. This shortcut will be used for students and teachers to launch the program. You should copy this to the location where your students launch their programs from. This directory is at “F:\TLCLauncher” if you installed to drive F:.

3b. Directory Rights/Permissions

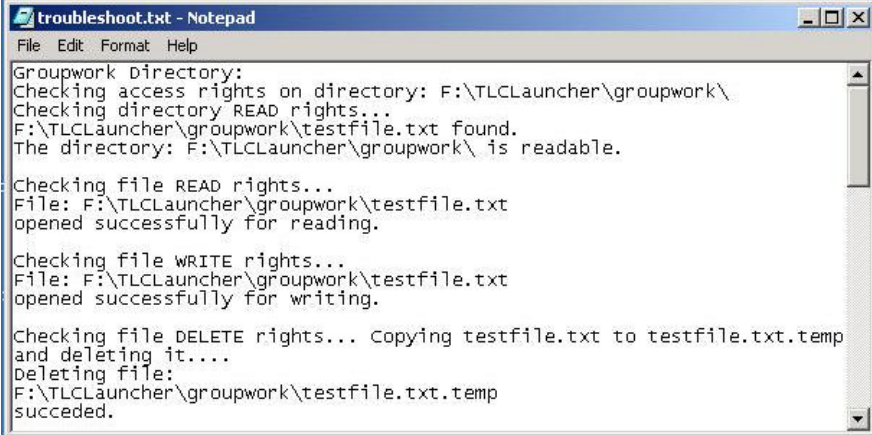
Directory	Purpose	Administrator Rights	Teacher Rights	Student Rights
Main Launcher Directory F:\TLCLauncher	Folder for Launcher program files and both the “Groupwork” & “Assignment” Directory.	Novell: “All Rights” Microsoft: “Full Control”	Novell: Read and File Scan Microsoft: Read & Execute, List folder contents, and Read	Novell: Read and File Scan Microsoft: Read & Execute, List folder contents, and Read
Groupwork Directory F:\TLCLauncher\Groupwork	Folder for teachers files that students must read but are not allowed to modify.	Novell: All Rights Microsoft: Full Control	Novell: Read, Write, Create, Erase, Modify, File Scan Microsoft: Modify, Read & Execute, List folder contents, Read and Write	Novell: Read, Write, Create, Erase, Modify, File Scan Microsoft: Modify, Read & Execute, List folder contents, Read & Write
Assignment Directory F:\TLCLauncher\Assignments	Folder for students and groups of students to share files.	Novell: All Rights Microsoft: Full Control	Novell: Read, Write, Create, Erase, Modify, File Scan Microsoft: Modify, Read & Execute, List folder contents, Read and Write	Novell: Read and File Scan Microsoft: Read & Execute, List folder contents, and Read
Program Directory	Folder for instructional program executable and data files.	Novell: All Rights Microsoft: Full Control	Novell: Read and File Scan Microsoft: Read & Execute, List folder contents, and Read	Novell: Read and File Scan Microsoft: Read & Execute, List folder contents, and Read
Home Directory H:\	Folder where students and teachers will store their personal files and work history. Must be unique for each user. .	Each user should have full rights to their own home directory. It must be root mapped to the same drive letter at logon.		

3c. Troubleshooting Directory Rights/Permissions

If the folder permissions are not set correctly the program will receive a number of errors including ‘Director Player Error’. There is a tool available to test the Rights/Permissions set on the necessary directories. This tool is very helpful in identifying improperly set.

The Admin tool is available from both the Student View and Teacher View screens. By pressing the CTRL-A key sequence (password=’**launcher**’), you activate a permissions test on the user logged into that machine. A Notepad document will open, outlining all of the Rights/Permissions to the TLC Launcher directory (including the Groupwork and Assignments folder), as well as the students save path for that particular user. Ensure that all directories have their permissions correctly set, as stated in the Directory Rights/Permissions section above.

You may be asked to print out the results of this test and fax or email it while talking to Technical Telephone Support (TTS).



```
troubleshoot.txt - Notepad
File Edit Format Help
Groupwork Directory:
Checking access rights on directory: F:\TLCLauncher\groupwork\
Checking directory READ rights...
F:\TLCLauncher\groupwork\testfile.txt found.
The directory: F:\TLCLauncher\groupwork\ is readable.

Checking file READ rights...
File: F:\TLCLauncher\groupwork\testfile.txt
opened successfully for reading.

Checking file WRITE rights...
File: F:\TLCLauncher\groupwork\testfile.txt
opened successfully for writing.

Checking file DELETE rights... Copying testfile.txt to testfile.txt.temp
and deleting it....
Deleting file:
F:\TLCLauncher\groupwork\testfile.txt.temp
succeeded.
```

You may be asked to print out the results of this test and fax or email it while talking to Technical Telephone Support (TTS). Please **include** the following in the text file or on the printout before sending:

1. School Name
2. Your Name and phone number
3. User Name that you were logged in as
4. User Type (Student Teacher or Admin)
5. Computer Name/Number/Location
6. Date and Time
7. Launcher Version Number
8. Program Name and Version Number

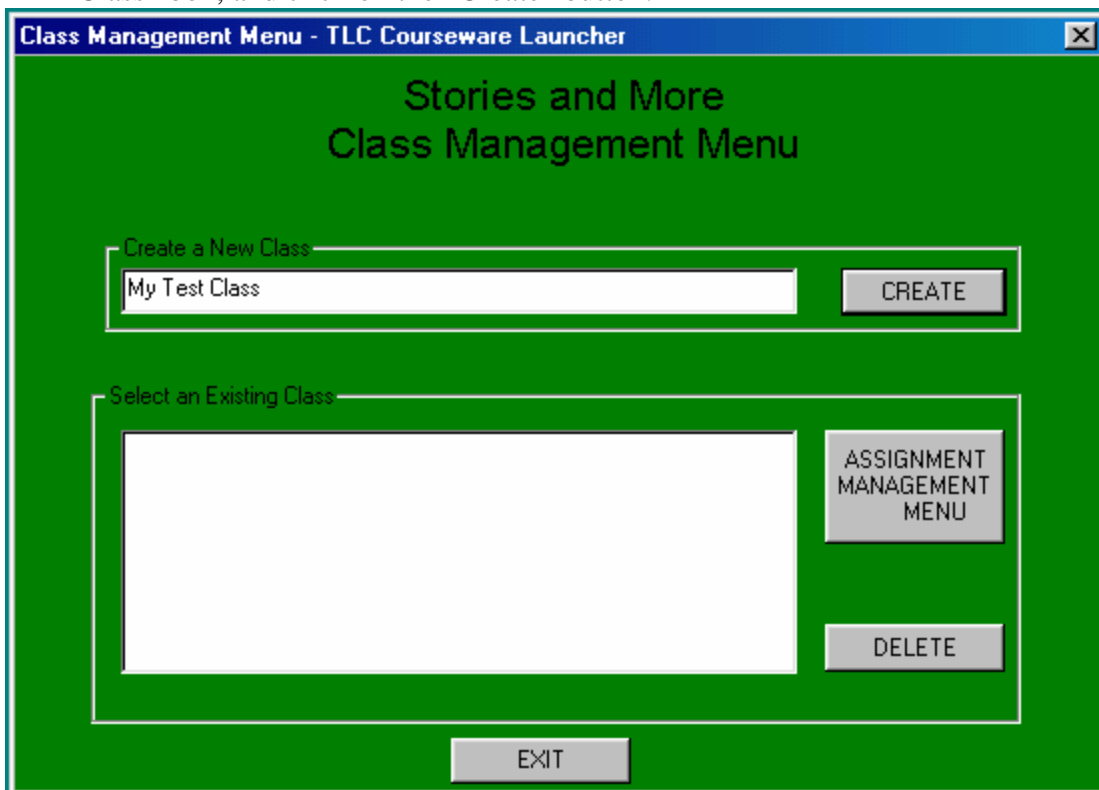
3d. Testing Procedures

The following procedures will let you exercise the major functions of the launcher with both a teacher and a student id. This will let you know that the program is installed correctly. Note: Screenshots are from the ‘Stories and More’ program but they will be similar for the program you are testing.

1. Logon with a teacher id.
2. Double click on the appropriate shortcut in the “TLCLauncher” folder. (Note: Or, wherever you made the shortcuts available to your users.)



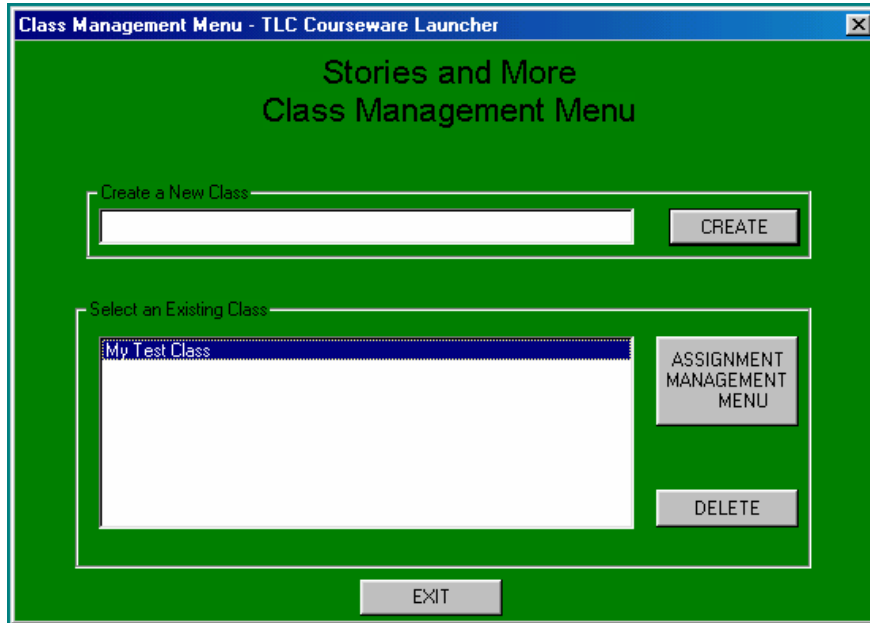
3. The ‘Launcher’ will load and you will see the following screen. This is the Class Management Menu’. Enter the *class name* you wish to use in the “Create a New Class” box, and click on the “Create” button.



Type “My Test Class” and Press “Create”

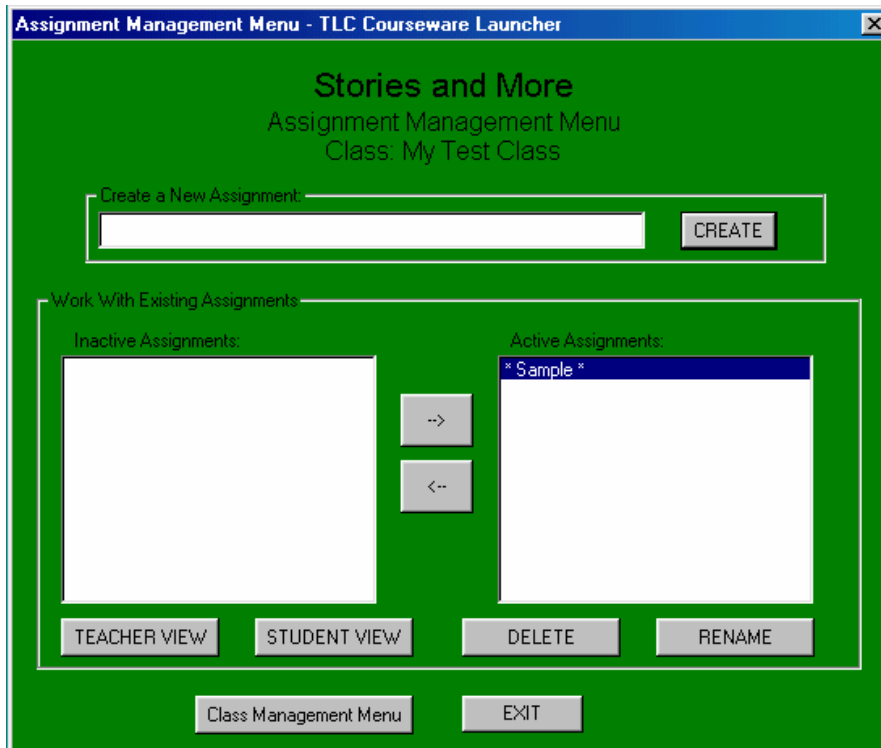
Stories and More 1 Installation Guide
“Network Installation”

4. The Class Management Menu will now look like this screen. Click on the *class name* in the “Select an Existing Class” box and press the “Assignment Management Menu” button.



Select a class and press ‘Assignment Management Menu’

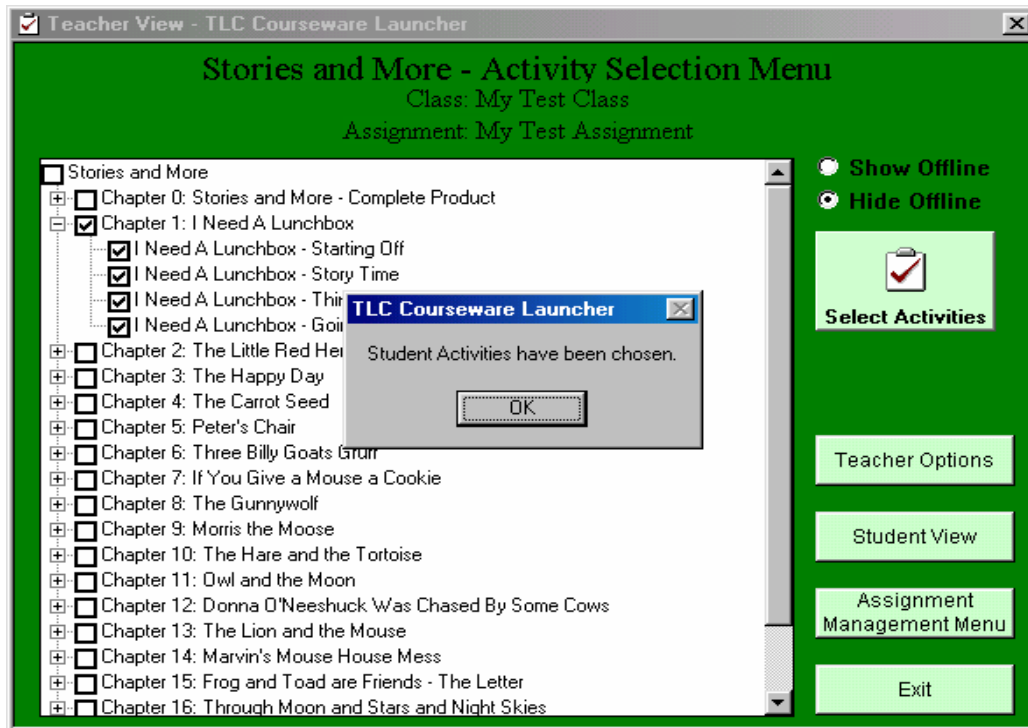
5. In the “Assignment Management Menu”, enter the *name of the assignment* you wish to use and click on create.



Enter “My Test Assignment” and click “Create”

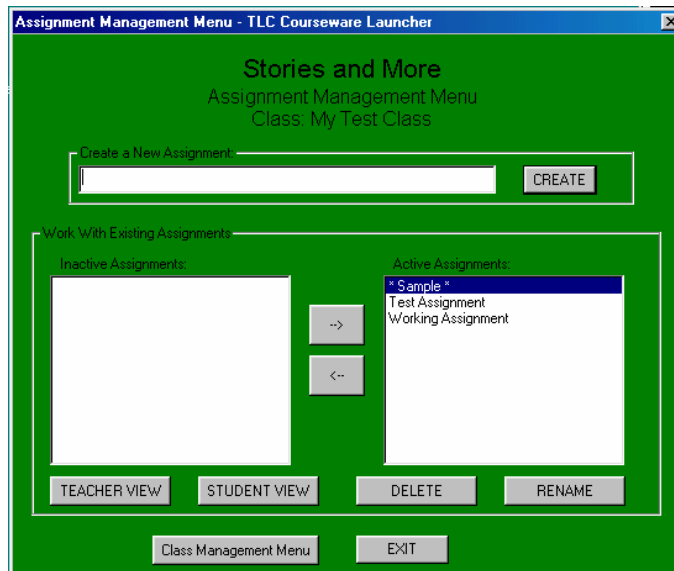
Stories and More 1 Installation Guide “Network Installation”

- The “Activity Selection Menu” will now be visible. Mark your selection and click on the “Select Activities” button. You will get a confirmation message like the one below. Click on “OK” to continue.



Select some activities and press “Select Activities”

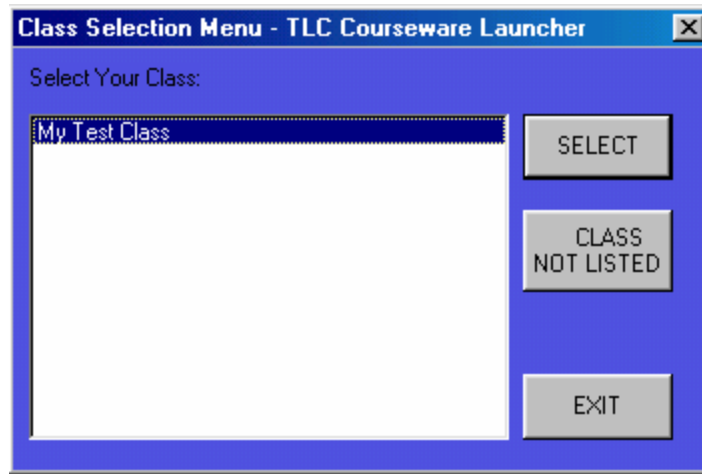
- Repeat step 5 and 6 in order to have a second assignment to test with.
- Click on the “Exit” button.
- Double click on the same courseware shortcut in the “TLCLauncher” folder. (Note: Or, wherever you made the shortcuts available to your users.) You will now see that the application has resumed at the “Assignment Management Menu” for the class created.



Click on “Exit”

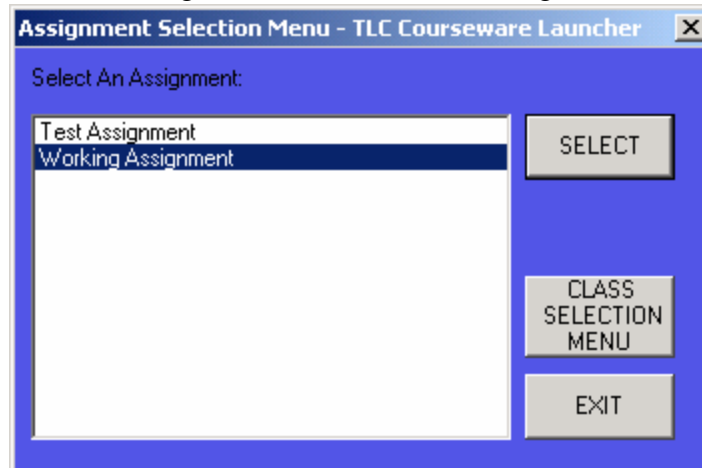
Stories and More 1 Installation Guide
“Network Installation”

10. Exit the application menu and logout as the teacher.
11. Login as a student.
12. Choose the appropriate “Class Name” from the “Select Your Class:” box. (Note: there could be a class name for every teacher who creates a class for this subject.) Next, click on the “SELECT” button.



Choose your class and click “SELECT”

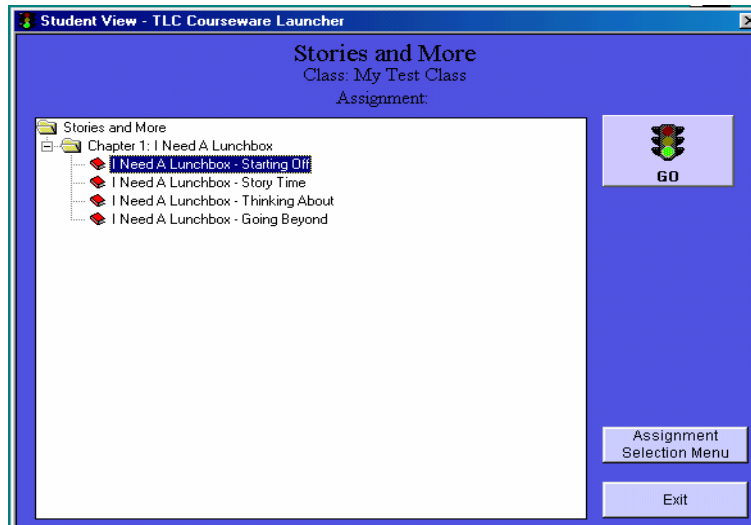
13. You will see the “Assignment Menu” with the assignments that you created.



Choose your assignment and click “SELECT”

Stories and More 1 Installation Guide “Network Installation”

14. You should see a screen similar to this one. Choose the first activity and click on the “GO” button



Select an activity and click “GO”

15. Complete at least one activity and press “GO” to ensure the programs are working. When the activity finishes click on the “Exit” to exit the launcher.
16. Run the application again and the student’s screen should have returned to the “Activity” choice screen like the one above.
17. Exit the application. Your test is finished.

4. SchoolConnect Installation

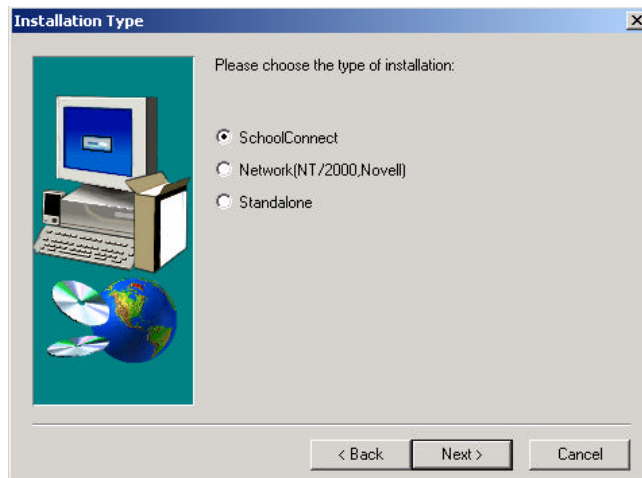


4. SchoolConnect Installation

Upgrade Note: If you are upgrading this program from a previous version the existing program directory “**must**” be removed before this program is installed. The installation process will take many times longer and leave excess files behind if the original version is not removed before this version is installed

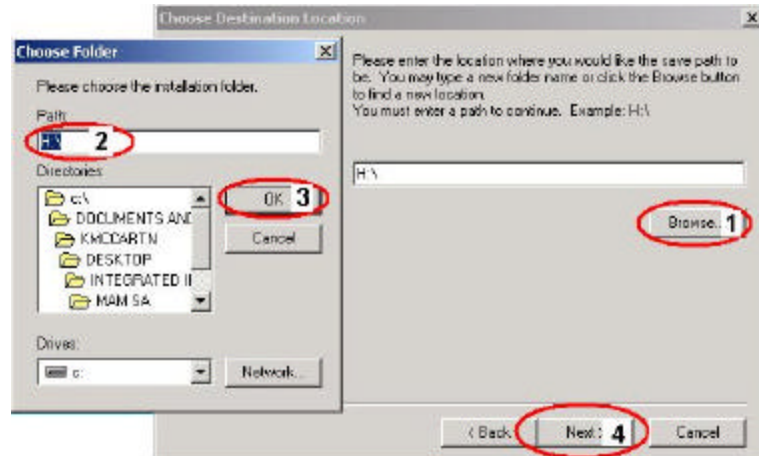
Login to a SchoolConnect workstation as Administrator.

1. Insert the Stories and More 1 CD into the CDROM drive and double click on My Computer on the Windows Desktop.
2. Double click on the CDROM drive.
3. Double click on the SETUP.EXE icon.
4. Click Next on the Welcome window.
5. You will be prompted for your installation type. Select SCHOOLCONNECT then click Next to continue.

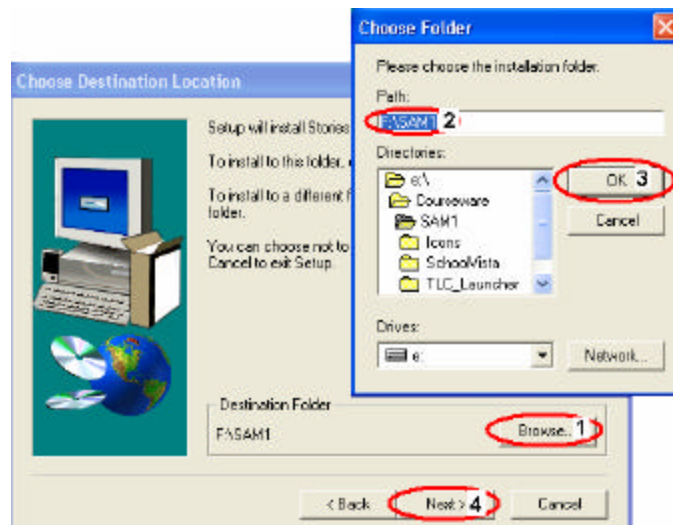


Stories and More 1 Installation Guide “SchoolConnect”

- You will be prompted for a save path. This is the location in which users will store Stories and More 1 files. The default path is H:\. To keep the default save path, press Next. To change the location, click on Browse (1), type in a new location in the Path box (2), click on OK (3), click Yes to create the new location (if it does not already exist) then click on Next (4).

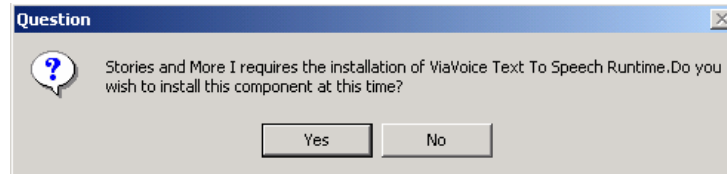


- You will now be prompted for an installation path for the software. The default location is F:\SAM1. To continue installing the software to this location, click Next. To change the location, click on Browse (1), type in a new location in the Path box (2), click on OK (3), click Yes to create the new location (if it does not already exist), then click on Next (4).

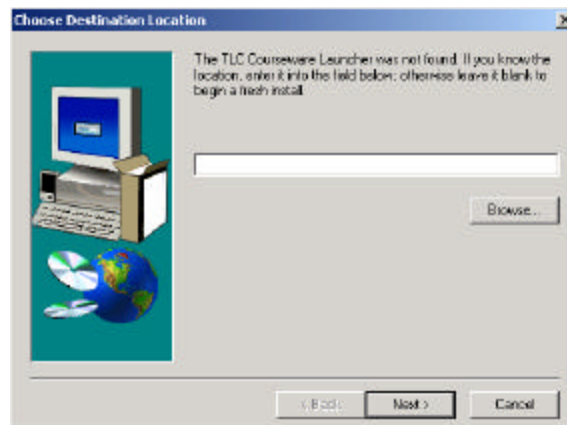


Stories and More 1 Installation Guide “SchoolConnect”

8. Necessary files will be copied and unless you have ViaVoice Text to Speech Runtime installed on your system, you will receive a message asking if you want to install this component. Click “Yes” to install it.



9. A “ViaVoice Runtime” window will appear. Click “Next”.
10. An “IBM ViaVoice Technology- ViaVoice TTS” window will appear. Click “Yes” to accept the license agreement.
11. A “Choose Destination Location” window will appear. Click “Next” to accept the default location for installation.
12. A “Setup Complete” window will appear. Click “Finish” to complete the ViaVoice installation.
13. The TLC Launcher installation will begin. If the TLC Launcher is not found on your system, a screen will pop up asking you to identify its location. **Note:** If the TLC Launcher is found, this will not happen; therefore, skip to the next step. If you know it is not installed, leave the destination box empty, click on Next and move to Step 16.



If it is installed, and you know its location, click on the Browse button, locate the folder, click on OK, then click on Next. Continue to next step.

Stories and More 1 Installation Guide
“SchoolConnect”

14. If the TLC Launcher was found initially or the specified location from Step 14 contains a copy of the TLC Launcher, one of the three following scenarios will take place:
 - a) If the TLC Launcher that exists on the system is older than the one being installed, the TLC Launcher will automatically be updated.
 - b) If the TLC Launcher that exists on the system matches the version being installed, the current file will be left.
 - c) If the TLC Launcher that exists on the system is newer than the one being installed, the current file will be left.

The Student Save Path will not be prompted for in any of these scenarios. The TLC Launcher will use the existing save path. To view the location of the Students Save Path, open up the TLCLauncher.ini file in the Groupwork folder of the TLC Launcher directory. The 6th line contains a SavePath=..... statement, that specifies the Students Save Path. Continue to Step 17.

15. Click on Next on the Welcome window.
16. Click on Finish on both the Launcher installation and the Stories and More 1 windows.
17. The final step in the installation process is to make Stories and More 1 available to teachers to assign to their students. Double click on My Computer on the Windows Desktop.
18. Browse to the Launcher directory (the default location being F:\TLC Launcher).
19. Highlight the Stories and More 1 shortcut, right click on it and select Copy.
20. Double click on the DROP ICONS HERE FOR TEACHER DISTRIBUTION icon on the Administrators Desktop, right click and select Paste. The installation is now complete.