

MOBIUS Corporation



&



Software Installation Guide for KIDWARE Millennium System



KIDWARE



Document Version 1.01

Table of Contents

1.0 Introduction	3
1.1 Who should install this program:.....	3
1.2 Technical Support in the U.S.:.....	3
1.3 'Node' Install vs. 'Server' Install.....	4
1.4 Program Requirements	5
2.0 Install KIDWARE Millennium System on Standalone Systems.....	6
2.1 Installing the English Program	6
2.2 Installing the Spanish Language Kit to the Program.....	6
2.3 Launch the program and test.....	6
3.0 Install KIDWARE Millennium System on a Network.....	7
3.1 Before you begin	7
3.2 Server Install of KIDWARE Network Program and Training Program.....	7
3.4 Assign Rights to the program directory - Microsoft	8
3.2 Node Install of KIDWARE Network Program and Training Program.....	9
3.5 Launch the program for the first time	10
3.6 About Teacher ID Names	10
3.7 Give Every Workstation access to the program.....	11
3.71 KIDWARE Program.....	11
3.72 KIDWARE Training	11
4.0 Quick Tour of Teacher Menus	12

1.0 Introduction

1.1 Who should install this program:

This manual is for the Technician who will be installing programs on your Local Area Network. It is assumed that your Technician has training and experience installing programs under your version of Microsoft Windows operating systems (Win 95, 98, NT, 2000 Professional or XP Professional) and has training and experience installing and maintaining programs under your Network Operating System (NOS) like Novell Netware, Microsoft Windows NT Server or Microsoft Windows 2000 Server.

1.2 Technical Support in the U.S.:

Toll Free: (866) 690-6748

Bright Blue Software provides technical support for this program in the United States. If you are a school or district in the United States and require assistance during the installation of this program or during the first year of operation you should call Bright Blue Software support at 1-866-690-6748. Our technical support service is called Technical Telephone Support (TTS) and is available free to any school that buys this program for one year from program shipping.

TTS covers the use, operation, installation and maintenance of this program. If you require assistance for this program, please call the TTS phone line **1-866-690-6748**. Certain program updates will be provided at the Bright Blue Software web site at www.brightbluesoftware.com. Before you install this program you should check this site to see if there are any program updates available. As problems are found and fixed the updates will be available for download.

After the first year customers are asked to purchase Technical Telephone Support (TTS) on an annual basis. Pricing for TTS may be obtained by calling 1-866-690-8090 or found at www.brightbluesoftware.com. One TTS contract covers a school building for all Bright Blue Software programs purchased from a Value Added Resellers (VARs) of Bright Blue Software. Your first year of TTS is included for FREE with the purchase of this program.

1.3 'Node' Install vs. 'Server' Install

The first part of the installation may be considered **'Server'** installs since these steps only have to be performed once. They copy the program files to the file server. It is not necessary to repeat these steps.

Server Install Components

- KIDWARE Network CD
- Spanish Language Voice Files

On a network, the workstation installation component needs to be repeated on every workstation that will be using the program. This **'Node'** install must be done to every workstation or may be incorporated into a 'workstation image' before it is replicated to every workstation. The KIDWARE fonts are necessary because the system fonts do not have enough differences between characters like 'T', 'L', 'I', 'O' and '0'. This is especially true when first introducing these letters to prereaders. The two components that must be node installed are:

Node Install Components

- KIDWARE fonts and Menu
- Training Module

Once the program is installed properly and correct rights and privileges are assigned then the program must be made available to all workstations that need access to this program. This can be done by creating a shortcut on every workstation or through the features of Zenworks, Visual Casel, TLC SchoolConnect or any other menuing system that you may have. It is the responsibility of the installer for making the program available to all users and instructing them on how to launch the program.

1.4 Program Requirements

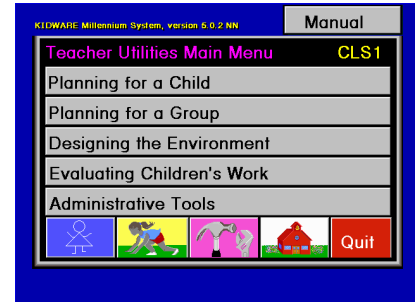
KIDWARE Millennium System Requirements:

1. Workstation Operating System: Windows 95 OSR2, Windows 98, Windows Me, Windows NT 4 Workstation or Windows 2000 Professional with Service Pack 2 installed..
2. Network Operating System: Novell Netware (4.x, 5.x or 6.x), Microsoft Windows NT Server 4.0 or Microsoft Windows 2000 Server.
3. Micro Processor: Pentium 133 MHz or better
4. Video Resolution: 800 x 600 with 16 bit color or better
5. Memory: 32 MB or better
6. Disk Space on File Server: 330 MB for typical school with 80 students
 - 270 MB for KIDWARE Millennium System Program Files and Training Program
 - 20 MB for Spanish Language Kit
 - 40 MB for Student Files. (80 Students for whole year or approx 512 KB per student)
7. Disk Space on Standalone Computer: 105 MB
 - 80 MB for KIDWARE Millennium System Program Files
 - 0 MB for Training Program. It is available on CD-ROM
 - 20 MB for Spanish Kit
 - 5 MB for Student Files. (10 Students for whole year or approx 512 KB per student)
8. Audio adapter equipped with speakers or headphones.
9. Teacher stations will also require a microphone. (Included in Teacher Kit)

2.0 Install KIDWARE Millennium System on Standalone Systems

2.1 Installing the English Program

1. Inset CD Labeled “KIDWARE Millennium System” and “Standalone Version”
2. If ‘Autostart’ is enabled on you CD-ROM drive the install program will load.
3. If ‘Autostart’ is NOT enable run the INSTALL.EXE program located on the root of the CD.
4. Follow the instructions on the screen and accept all defaults.



2.2 Installing the Spanish Language Kit to the Program

1. Inset CD Labeled “KIDWARE Millennium System” and “Spanish Kit”
2. Run the INSTALL.EXE program located on the root of the CD.
3. Follow the instructions on the screen and accept all defaults.

2.3 Launch the program and test

1. Click on START -> Programs -> KIDWARE Millennium System -> KIDWARE Millennium System
2. The First Time the program launches you will go to “Setup a Class”. You must create a class and then use the Quick Start to enroll students.
3. A screen full of icons will appear. Click on the blue circle in the bottom right corner.
4. Enter “kidsway” as the password when prompted.
5. The “Teacher Utility Main Menu” will appear
6. Click on “Manual” in the upper right corner”
7. The KIDWARE Help menu will appear.
8. You may read these instructions or read the printed teacher manual
9. Exit the program

Note1: The default password is “kidsway”

Note2: The program and student data will be located in the folder “\wkidsway” on the root of the hard disk.

3.0 Install KIDWARE Millennium System on a Network

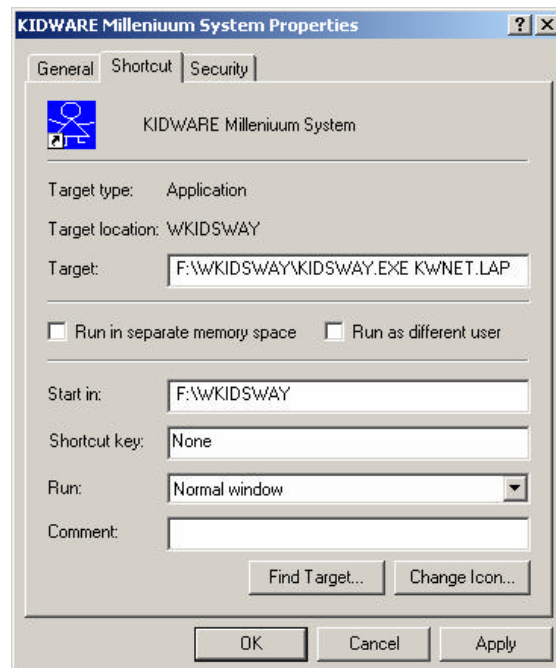
3.1 Before you begin

1. Your network must be configured so that every user can locate the program directory through the same drive letter. This is normally done through the system login script (Novell) or User Profile/Profile/Logon Script (Microsoft).

3.2 Server Install of KIDWARE Network Program and Training Program

1. Login as an administrative user with all rights.
 - Administrator (Microsoft)
 - Sysop or Admin (Novell)
2. Inset CD Labeled “KIDWARE Millennium System” and “Network Version”
3. If ‘Autostart’ is enabled on you CD-ROM drive the install program will load.
4. If ‘Autostart’ is NOT enable run the INSTALL.EXE program located on the root of the CD.
5. The install program will load.
 - a. Select the Server Type (ex. Windows NT)
 - b. Select the Network Drive (ex. F:)
 - c. Select the “Install ALL KIDWARE Millennium System for Windows Programs”
 - d. Select “Add a startup Icon to the Windows Desktop”
 - e. Follow the instructions on the screen and accept all defaults.

Note: The following Shortcut will be created in the start menu (Drive F: Shown) or Desktop.



3.3 Assign Rights to the program directory - Novell

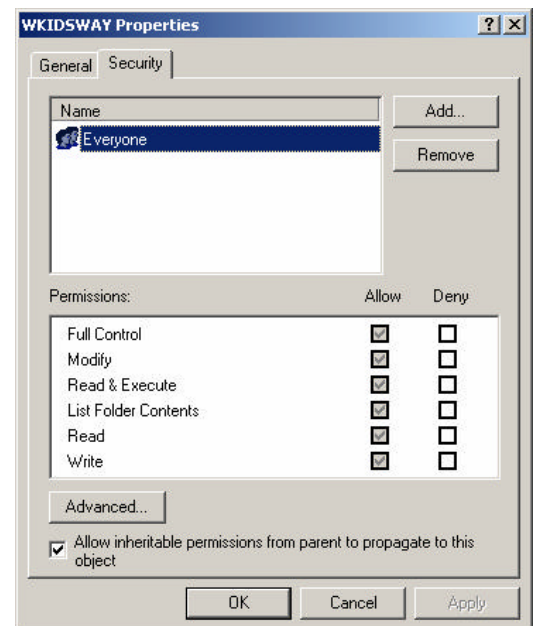
All users of this program must have ALL rights to ALL files and folders under the main folder. The main folder is: “\wkidsway” on the drive you installed to. The installation program will assign ‘ALL’ rights to the group ‘Everyone’ during installation but you may verify this.

1. Load the Netware Administrator Program (NWADMIN or NWADM32)
2. Navigate the tree and select the group ‘Everyone’.
3. Select “Rights to Files and Directories”
4. Verify that full rights (ie Read, Write, Create, Erase, Modify, File Scan) are assigned to the “\wkidsway” directory.

3.4 Assign Rights to the program directory - Microsoft

All users of this program must have ALL rights to ALL files and folders under the main folder. The main folder is: “\wkidsway” on the drive you installed to. You must ensure that everyone is assigned rights.

1. Login as Administrator on the **file server**.
2. Load Windows Explorer
3. Navigate the tree and locate the program directory (ie \wkidsway on the share that users are Mapped to
4. Right Click on the “wkidsway” folder
5. Select Properties
6. Select the Security Tab
7. Assign ‘FULL CONTROL’ to the group Everyone or the groups your require.



3.2 Node Install of KIDWARE Network Program and Training Program

1. Login as Administrator on a workstation

2. Run the Program **\WKIDSWAY\SETUPWKS\SETUPWKS.EXE**

This will install the KIDWARE fonts to the workstation and create a start menu group and shortcut for running the KIDWARE program. The program files are not copied to the workstation



KIDWARE
Milleniu...

3. Run the Program **\WKIDSWAY\TRAINING\SETUPWKS\SETUP.EXE**

This will multimedia plug-ins and create a start menu group and shortcut for running KIDWARE Training. The multimedia files are not copied to the workstation



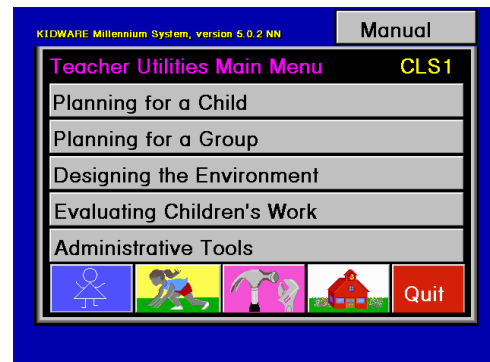
KIDWARE
Training

3.5 Launch the program for the first time



1. Click on the icon to launch the program
2. Enter "SUPPORT" as the Teacher ID when prompted. You will be asked to hit OK to creating a new teacher called 'support'.
3. Click on "Add a Class"
4. Enter "Test Class" as the class name. Your class will be created and will be called CLS1 if it is the first class in the system. The Quick Start menu will appear.

5. Click on the Teacher Utilities Main Menu button to load Teacher Utilities.



6. Click on "Manual" in the upper right corner"
7. The KIDWARE Help menu will appear.
8. You may read these instructions or read the printed teacher manual
9. Exit the program

Note1: The default password is "kidsway"

Note2: The program and student data will be located in the folder "\wkidsway" on the root of the network drive you installed to.

3.6 About Teacher ID Names

Students who start KIDWARE Millennium System will type their Teacher's ID name. For this reason it is better to not use the teacher's network login ID.

1. You do NOT have to use the teacher's login name
2. Teacher IDs may be eight letters long with no spaces.
3. Choose Simple/Easy Teacher IDs that small children can remember. (ex 'Smith', 'Jones' or 'Room3')

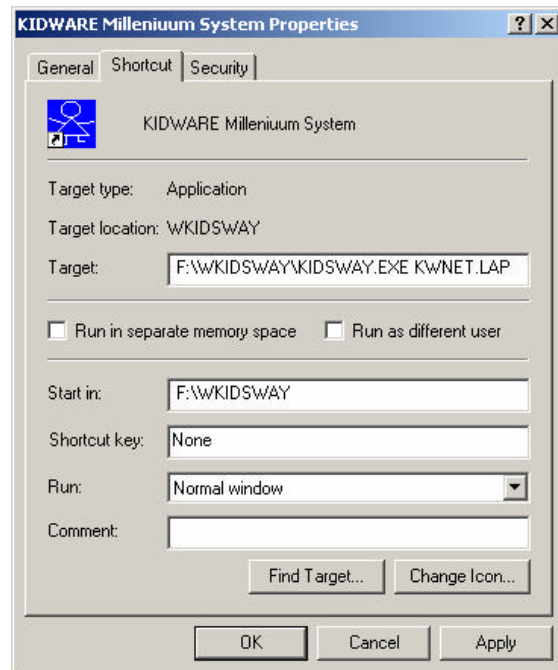
3.7 Give Every Workstation access to the program

Every computer must have the ability to find and launch the program. This can be done by creating a shortcut on every workstation or through the features of Zenworks, Visual Casel, TLC SchoolConnect or any other menuing system that you may have. It is the responsibility of the installer for making the program available to all users and instructing them on how to launch the program.

3.71 KIDWARE Program

A program is available (X:\wkidsway\setupwks\setupwks.exe where X: is the program drive letter) that will add a shortcut to a workstations start menu and install the KIDWARE fonts. This must be used on every workstation to prepare them for running KIDWARE. A simple way to use this is to use Start -> Run and then enter “X:\wkidsway\setupwks\setupwks.exe”

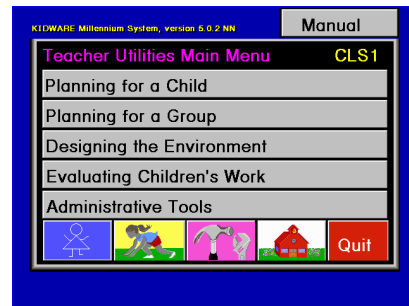
Shortcut created by install program:



3.72 KIDWARE Training

Another program is available (X:\wkidsway\training\setupwks\setup.exe where X: is the program drive letter) that will add a shortcut to a workstations start menu and install the KIDWARE Training plug-ins. This must be used on every workstation to prepare them for running KIDWARE Training. A simple way to use this is to use Start -> Run and then enter “X:\wkidsway\setupwks\setupwks.exe”

4.0 Quick Tour of Teacher Menus



ICON	Screen
 <p>Student Login Screen</p>	 <p>Blue Dot to exit Default password is 'kidsway'</p>
 <p>Select a class</p>	 <p>Move the cursor to your class and press a mouse button.</p>
 <p>Teacher's Toolbox</p>	
 <p>Quick Start</p>	
 <p>Manual</p>	

