

TLC NetConnect is IBM's state-of-the-art Internet management tool for K-12 schools which brings a host of features to the modern classroom. These features benefit both the student and the school district. TLC NetConnect is designed with the school environment in mind. It gives the tools and capabilities that students need to Surf the Web, communicate with others and publish school projects for the whole web to see. While at the same time providing the protection and safeguards that the school administration need to monitor the student's compliance with their Acceptable Use Policy and provide a safe working environment for the student to learn in.

One of the most important tools the Internet offers is **E-mail**. People from around the world and in all walks of life use E-mail. It is one of the first skills taught to any computer user. TLC NetConnect makes E-mail easy by providing a unique address for every person in the school and a user-friendly interface for even the youngest students. Some features are uniquely suited to helping students function in today's world. The ability to **translate any message between English, Spanish, German, Italian and French is available**.

Management of TLC NetConnect is easy and powerful. Administrators can control the types of attachments that are allowed and can control automatic deletion of most E-mail viruses. TLC NetConnect also provides for both content filtering of the E-mail

messages and **"Spam" filtering** to reduce the amount of irrelevant mail reaching the users. A **"bad words" filter** is included. Tools are provided to **manage student's access to E-mail**. You can disable their ability to send E-mail, limit the E-mail to just within the school or allow them to communicate with anyone on the Internet.

IBM  
TLC NetConnect



K-12 

The single most popular use of the Internet is the World Wide Web. The most popular and robust **web server** in the world is built into TLC NetConnect. An industrial-strength **"Caching Proxy" server** is provided to improve performance. The Proxy also controls access to, and protects students from, inappropriate web sites, advertisements, pop-ups and web based viruses. The school can easily configure where students can and *cannot* get to, on the web.

Students have a new way of publishing their schoolwork. They can create web pages using the Web Page Creator. The **Web Page Creator** is a simple method of **creating and publishing web pages**. Students can easily build a web page that include graphics and pictures and submit it to a teacher for approval. The teacher can then evaluate the work and publish the student's web page by clicking on just one button.

IBM's TLC NetConnect is a solution that is designed to fit well into today's 21st century K-12 schools.



[www.brightbluesoftware.com](http://www.brightbluesoftware.com)

## Server Software

**TLC NetConnect** uses IBM's Industrial-strength components, DB/2 and WebSphere, to provide Industrial-strength reliability and performance.

**E-mail Server:** Fully-featured E-mail service is provided using standard SMTP and POP3 protocols. Written in Java, the TLC NetConnect E-mail system includes such advanced features as Spam filtering and Content filtering of the messages.

**Web Server:** Based on the Apache web server, the IBM HTTP Server allows you and your students to publish web pages easily. There is no limit to the pages can be hosted for the district and each school.

**Proxy Server:** Provides a safe environment for students by blocking access to undesirable web sites. Through IBM's web page caching technology you can reduce your communications costs while improving performance. It will also automatically pre-cache the most visited sites from the previous day. Use of the proxy server is logged and detailed reports are generated each morning. The reports show who went where on the web as well as showing which users were prevented from getting to the undesirable sites.

**Remote Support Tools:** A variety of support tools are provided. These programs help Bright Blue Software Technical Support and district technicians to manage the technology from a central location. Upgrades can be performed remotely.

**Authentication Server:** This service is used to synchronize E-mail accounts and group memberships with a Novell DNS tree, a Microsoft ADS database or other host with an LDAP database. This means that individual user ids do not need to be maintained. When a user logs in they use the same ID and password that they have to access the school LAN. Their credentials are authenticated by your LAN server before they are allowed access to TLC NetConnect.

**IBM Translation Server:** This service can translate E-mails to and from English, Spanish, French, or Italian. This is the same translation server used by corporation and governments to enhance their communications.

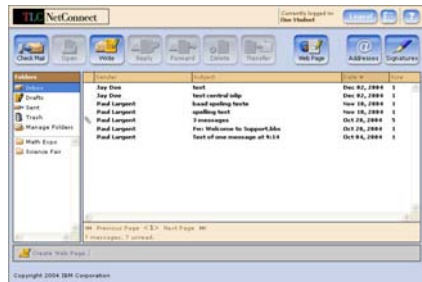
## Security and Monitoring Tools:

- **Spam Check** – All E-mail is reviewed to for spam content and is compared against a global database of known spammers. Suspect messages are quarantined where only administrators can see them.
- **Bad Words Filter** – All E-mail is reviewed for use of crude, vulgar and threatening language. Teachers or administrators can be alerted and they may review these messages.
- **Student Web Use Reports** – Every web page that a student accesses is monitored and recorded. Reports are generated that detail what sites they visit and what sites they are blocked from visiting.
- **Attachment Monitoring** – all E-mail is scanned for dangerous attachment types. Suspect files are stripped from the E-mail before it is delivered to the user's mailbox.
- **Students E-mail privilege** – is determined by a teacher or administrator. Some students may be allowed to communicate with anyone on the global Internet, other students may be limited to emailing only students and teachers at their schools, and finally some students may be limited to sending and receiving E-mail with their teacher or not being allowed to send E-mail at all.
- **Script Virus Blocking** – all E-mails are scanned by TLC Web-Mail when they are opened. Any dangerous scripting is removed and can not be forwarded to other users

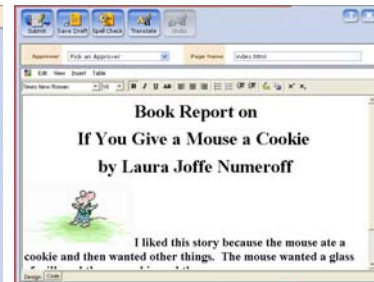
## Client Software

**Web Access** to the World Wide Web is provided through Netscape Navigator™, Internet Explorer™ or the open source browser, Mozilla. All web access is monitored by the proxy server and reports are available on the web pages accessed by each student.

**TLC WebMail** is a web based E-mail client has been created for the unique requirements of the school environment. Students can use E-mail to collaborate on class projects day or night with other students and their teacher. TLC WebMail allows students and teachers access to their own individual and personal E-mail account. TLC WebMail allows the sending and receiving of MIME compatible messages within the school and around the world. The Windows client also provides support for full HTML and font formatting of the messages.



TLC WebMail



Web Page Creator

**TLC Web Page Creator** allows students, teachers and administrators to create their own web pages. This tool is an intuitive word processor-like application that can be used by your earliest grade levels. It also has advanced features like tables, bookmarks, hyperlinks, common symbols, divider lines, text styles, text attributes, text justification, bulleted lists, numbered lists, inserting pictures from files and cutting and pasting from other sources like word processors or web pages.

**TLC Web Robot** is a set of procedures that ensures that only approved content is posted to the web server. Students must submit their completed web pages to a teacher or administrator. The teacher must then review their work and may choose to accept or reject their web page. A single mouse click will cause the web page to be accepted and then TLC Web Robot automatically posts the page to the web server. Once approved, the web page can be viewed by any student, teacher or even a parent at home.

**Unified Address Book** keeps a list of all users and distribution lists. The complete list of users is available while composing an E-mail so users do not have to remember the IDs of the users they are communicating with.

**Supported Client Environments** include most modern browsers and operating systems. These include the latest versions of Internet Explorer, Netscape Navigator, Mozilla, Opera and other modern browsers running on operating systems like Windows 98, 2000, XP, OS 9, OS X and Linux.