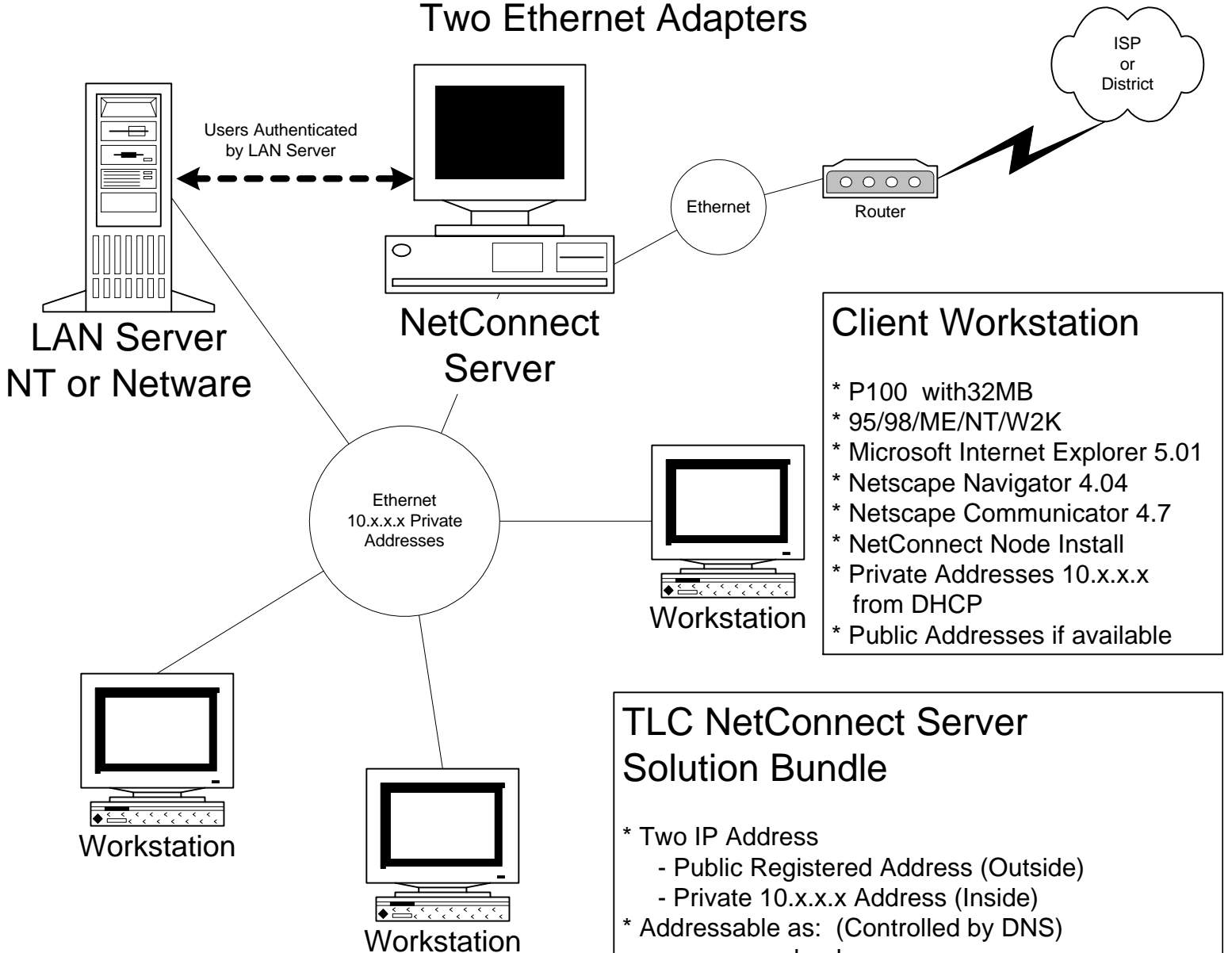


TLC NetConnect School Level Two Ethernet Adapters



Client Workstation

- * P100 with 32MB
- * 95/98/ME/NT/W2K
- * Microsoft Internet Explorer 5.01
- * Netscape Navigator 4.04
- * Netscape Communicator 4.7
- * NetConnect Node Install
- * Private Addresses 10.x.x.x from DHCP
- * Public Addresses if available

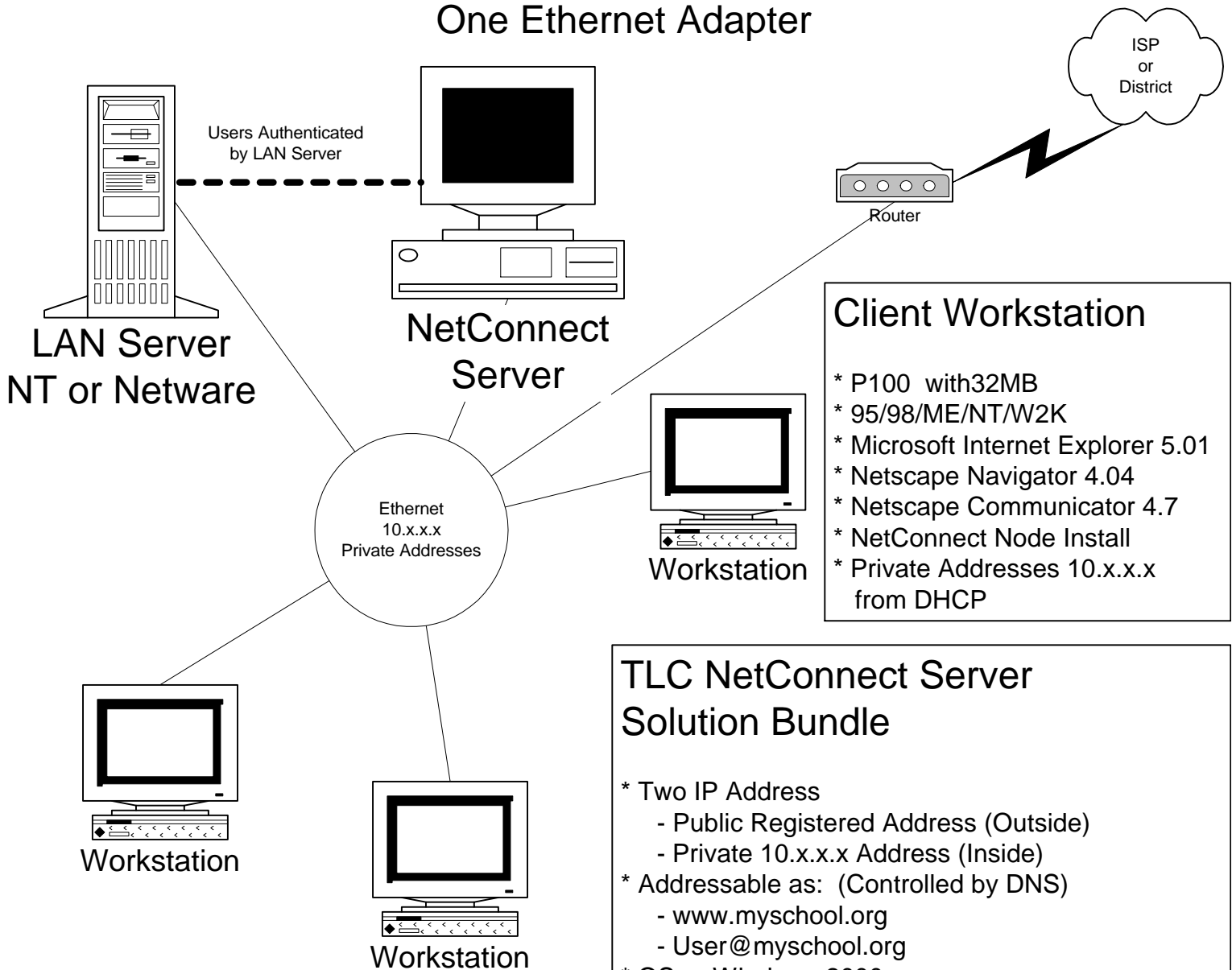
TLC NetConnect Server Solution Bundle

- * Two IP Address
 - Public Registered Address (Outside)
 - Private 10.x.x.x Address (Inside)
- * Addressable as: (Controlled by DNS)
 - www.myschool.org
 - User@myschool.org
- * OS - Windows 2000
- * DNS, DHCP - Windows 2000
- * Mail Server (Pop3/SMTP) - NetConnect
- * News Server (NNTP) - NetConnect
- * Mail Robot - NetConnect
- * Web Robot - NetConnect
- * Web Server - Apache from IBM Websphere
- * Caching Proxy Server - IBM Web Traffic Express
- * FTP - TypSoft for Admin Use
- * Remote Control - VNC and NetFinity Client
- * Proxy Services - Firedoor
- * Intruder Detection/Monitoring - Black Ice Defender
- * Authenticates Users against LAN Server

LAN Server

- * NT or Netware (3.x, 4.x, 5.x)
- * Management System:
 - School Connect
 - Visual Casel
 - None
- * Usernames loaded here
- * Best Practice:
 - Net Connect Client program here
 - Users have 'home' directory here (Bookmarks, Address Book & News List)

TLC NetConnect School Level One Ethernet Adapter



Client Workstation

- * P100 with 32MB
- * 95/98/ME/NT/W2K
- * Microsoft Internet Explorer 5.01
- * Netscape Navigator 4.04
- * Netscape Communicator 4.7
- * NetConnect Node Install
- * Private Addresses 10.x.x.x from DHCP

TLC NetConnect Server Solution Bundle

- * Two IP Address
 - Public Registered Address (Outside)
 - Private 10.x.x.x Address (Inside)
- * Addressable as: (Controlled by DNS)
 - www.myschool.org
 - User@myschool.org
- * OS - Windows 2000
- * DNS, DHCP - Windows 2000
- * Mail Server (Pop3/SMTP) - NetConnect
- * News Server (NNTP) - NetConnect
- * Mail Robot - NetConnect
- * Web Robot - NetConnect
- * Web Server - Apache from IBM Websphere
- * Caching Proxy Server - IBM Web Traffic Express
- * FTP - TypSoft for Admin Use
- * Remote Control - VNC and NetFinity Client
- * Proxy Services - Firedoor
- * Intruder Detection/Monitoring - Black Ice Defender
- * Authenticates Users against LAN Server

LAN Server

- * NT or Netware (3.x, 4.x, 5.x)
- * Management System:
 - School Connect
 - Visual Casel
 - None
- * Usernames loaded here
- * Best Practice:
 - Net Connect Client program here
 - Users have 'home' directory here (Bookmarks, Address Book & News List)

School District Wide TLC NetConnect

